

Model

Designation	HTD30AA	220-240V/50Hz ~	Sales code:	CDO00218
-------------	----------------	------------------------	-------------	-----------------

Compressor design

Oil type	Mineral	Refrigerant(s)	R600a
Oil viscosity	2,3cSt	Displacement	3cm ³ / 0,18cu.in
Oil quantity	77cm ³ / 2,6fl.oz	Compressors on pallet	168
Refr. charge - tech. limit	150g / 5,3oz		
Free gas volume comp.	837cm ³ / 28,3fl.oz		
Weight	3,9kg / 8,6lbs		
Motor protection	external		
Winding resistance main	98,1Ω (at 25°C)		
Winding resistance aux	82,5Ω (at 25°C)		
Max. winding temp.	120°C / 248°F		
Max. discharge temp.	120°C / 248°F		



General - Configurations with HTD30AA

	Conf. 1
Motorconfiguration	RSIR
Power supply (nominal)	220-240V/50Hz
Number of phases	1
Voltage range	187-264V
Approvals	VDE
Starting torque	LST
Note	Electrical equipment will be pre-assembled to compressor.

Applications with HTD30AA

	Conf. 1
Refrigerant	R600a
Application	LBP
System cooling	static
Hot gas defrost	-/-
Long interval pull down	-/-

Electrical data - Configurations with HTD30AA

	Conf. 1
Starting device type	PTC
Run capacitor	-/-
Start capacitor	-/-
LRA (locked rotor amps / 4s)	0,95A
RLA (rated load amps / 1s)	
Cut in current	2,38A
IP class	21

Model

Designation

HTD30AA

220-240V/50Hz ~

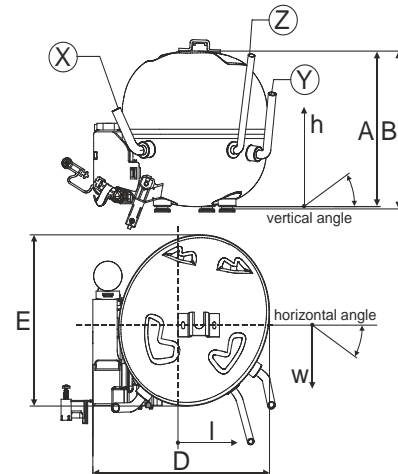
Sales code:

CDO00218

Compressor dimensions

Housing	A Height	133mm / 5,24in
	B Height	134,5mm / 5,3in
	C Length shell	135mm / 5,31in
	D Length w. cover	159mm / 6,26in
	E Width	147mm / 5,79in

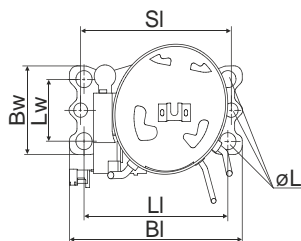
Connectors		Suction	Discharge	Process
		X	Y	Z
Diameter	[mm]	øi 6,1-6,3	øi 4,9-5,1	øo 5,92-6,08
	(i:inside, o:outside) [in]	øi 0,24-0,25	øi 0,19-0,2	øo 0,23-0,24
Material		copper	steel/CU	copper
Horizontal angle	±2°	0°	80°	74°
Vertical angle	±2°	79°	79°	72°
Position l/h/w	[mm]	-54/83/74	87/96/72	69/130/103
	[in]	-2,1/3,3/2,9	3,4/3,8/2,8	2,7/5,1/4,1
Straight tube l.	[mm]	14	14	14
	[in]	0,5	0,5	0,5



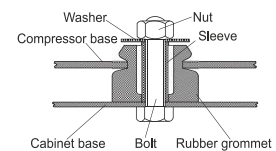
Compressor fixation

Adapter plate

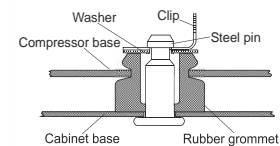
Bolt joint



Baseplate	[mm]	[inch]
BI	204	8.03
Bw	100	3.94
Large holes	[mm]	[inch]
LI	170	6.7
Lw	70	2.76
SI	178	7
øL	ø 16	ø 0.63



Snap-on



For standard mounting	one comp.	multi pack
Adapter plate	157008_	
Bolt joint M6 ø16mm	118-1917	118-1918
Bolt joint ø1/4" ø16mm	118-1946	
Snap-on ø7,3 ø16mm	118-1947	118-1919

Application notes

Various options of housing are possible (dip-tray fixture) - please contact SECOP-Sales.

Various options of connectors are possible - please contact SECOP-Sales.

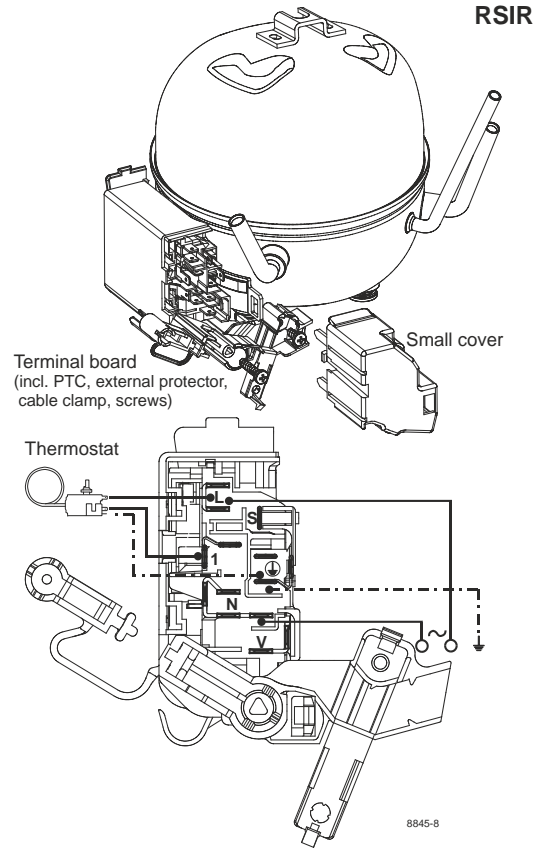
Model

Designation	HTD30AA	220-240V/50Hz	Conf. 1	Sales code:	CDO00218
-------------	----------------	----------------------	----------------	-------------	-----------------

Configuration

Motorconfiguration	RSIR
Power supply (nominal)	220-240V/50Hz 1~
Refrigerant	R600a
Application	LBP
Voltage range	187-264V
Starting torque	LST
Approvals	VDE

Electrical accessories / wiring diagram

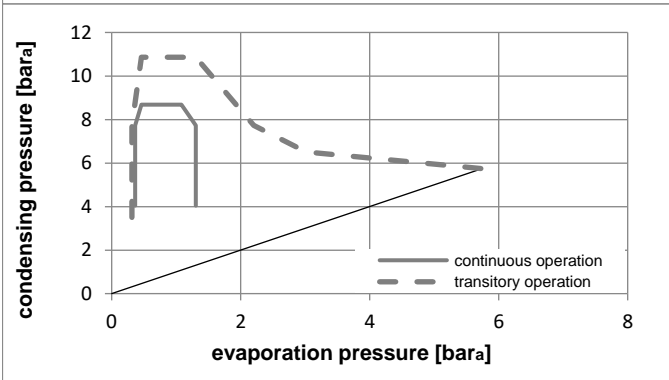
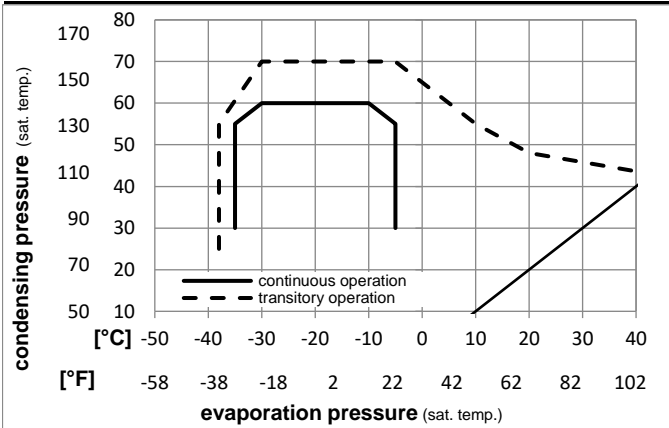


Ambient temperatures / system cooling

Ambient temperature min.:	10°C / 50°F
Ambient temperature max.:	43°C / 110°F

System cooling (n/a: outside limits)			
T ambient	LBP	MBP	HBP
32°C / 90°F	static	n/a	n/a
38°C / 100°F	static	n/a	n/a
43°C / 110°F	static	n/a	n/a

Operation pressure range



Components (will be pre-assembled)

- terminal board (PTC,4.8mm) BN E7
- motor protector BDG AE 90 AHM x E7
- cover terminal board 160943_

Model

Designation **HTD30AA 220-240V/50Hz** Conf. 1 Sales code: **CDO00218**

Optimization + standard conditions

220V/50Hz, RSIR, static, VDE

	Evaporating pressure (saturation temperature)				Condensing pressure (saturation temperature)						Power consumption			Ref. mass flow
	pe	pc	RGT	Tliq	Cooling capacity			COP	EER		P1	I	m	
	[°C]	[°F]	[°C]	[°C]	[W]	[Btu/h]	[kcal/h]	[W/W]	[Btu/Wh]	[kcal/Wh]	[W]	[A]	[kg/h]	
	-23,3	45	32,2	32,2	53,9	184	46,4	1,88	6,43	1,62	28,6	0,17	0,58	opt
	-9,94	113	90	90										
	-23,3	54,4	32,2	32,2	50,0	171	43,0	1,67	5,72	1,44	29,9	0,17	0,54	ASHRAE LBP
	-10	130	90	90										
	-25	55	32	55	37,0	127	31,9	1,31	4,47	1,13	28,3	0,17	0,48	cecomaf LBP
	-13	131	89,6	131										
	-23,3	48,9	4,44	48,9	41,1	140	35,4	1,41	4,81	1,21	29,2	0,17	0,60	ARI540 LBP
	-10	120	40	120										
	-23,3	40,6	32,2	32,2	55,9	191	48,1	2,00	6,84	1,72	27,9	0,16	0,60	AHAM LBP
	-10	105	90	90										
	-35	45	32	45	23,4	80	20,1	1,23	4,21	1,06	19,0	0,14	0,28	opt
	-31	113	89,6	113										

Performance tables

220V/50Hz, RSIR, static, VDE

	pe	Cooling capacity			COP	EER		P1	I	m	
	[°C]	[°F]	[W]	[Btu/h]	[kcal/h]	[W/W]	[Btu/Wh]	[kcal/Wh]	[W]	[A]	[kg/h]
[°C / °F]	-35	-31	23,4	80	20,1	1,23	4,21	1,06	19,0	0,14	0,28
cond. pressure	-30	-22	32,8	112	28,2	1,41	4,82	1,21	23,2	0,15	0,39
pc= 45/113	-25	-13	44,2	151	38,0	1,62	5,53	1,39	27,3	0,16	0,53
return gas temp.	-23,3	-10	48,6	166	41,8	1,70	5,80	1,46	28,6	0,17	0,58
RGT= 32/90	-20	-4	58,2	199	50,1	1,86	6,35	1,60	31,3	0,18	0,69
liquid temp	-15	5	75,3	257	64,8	2,13	7,28	1,83	35,3	0,19	0,90
Tliq= 45/113	-5	23	121,4	415	104,5	2,74	9,36	2,36	44,3	0,23	1,46
[°C / °F]	-35	-31	17,3	59	14,9	0,93	3,18	0,80	18,6	0,14	0,23
cond. pressure	-30	-22	26,5	90	22,8	1,13	3,84	0,97	23,5	0,15	0,34
pc= 55/131	-25	-13	37,0	127	31,9	1,31	4,47	1,13	28,3	0,17	0,48
return gas temp	-23,3	-10	41,1	140	35,4	1,37	4,69	1,18	29,9	0,17	0,54
RGT= 32/90	-20	-4	49,7	170	42,8	1,50	5,12	1,29	33,2	0,18	0,65
liquid temp	-15	5	65,0	222	55,9	1,70	5,80	1,46	38,3	0,21	0,85
Tliq= 55/131	-5	23	105,8	361	91,0	2,13	7,27	1,83	49,7	0,26	1,39