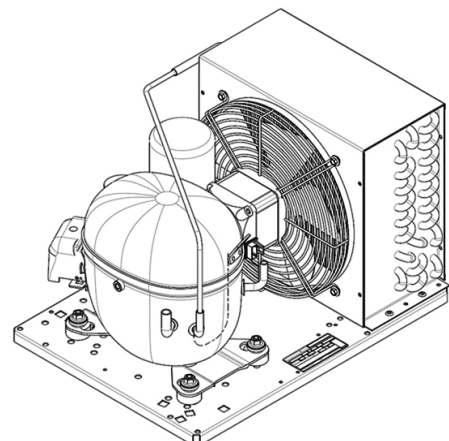


UNT2178GK



ENGINEERING CODE
502EA5212AA



POWER SUPPLY
220-240 V 50 Hz



MOTOR TYPE
CSIR



REFRIGERANT
R-452A



APPLICATION
LBP



STANDARD
EN13215_RG20

CE

ECODESIGN
COMPLIANT



COOLING CAPACITY
443 W



EFFICIENCY
0.97 W/W

DATA

GENERAL DATA

Model UNT2178GK

ACCESSORIES

Discharge valve FLARE 1/4" 2110025

Suction valve FLARE 3/8" 2110056

CONDENSING COMPONENTS

Compressor NT2178GK LBP

Condenser 4R11T 2451217

Refrigerant R-404A

Expansion Device C-V

Fan Blade Diameter 254

Fankit 16W 254/28/5B 1996579

MECHANICAL DATA

Air Flow	460 m ³ /h
Height	296 mm
Receiver	1.2 L
Shaft Power	16
Weight	27 Kg
Width	340 mm
Length	474 mm

PERFORMANCE

TESTED CONDITIONS

Tested Refrigerant	R-452A
Tested Application	LBP
Tested Standard	EN13215_RG20

RATED POINTS

Ambient Temperature °C	Evaporating Temperature °C	Cooling Capacity W	Efficiency W/W	Consumo de Potencia W
32	-35	443	0.97	456

Test Condition: Subcooling 3 K, Return Gas 20 °C.

PERFORMANCE CURVE

Ambient Temperature 25°C

Evaporating Temperature °C	Cooling Capacity W	Efficiency W/W	Consumo de Potencia W
-40	422	1.04	407
-30	644	1.24	519
-25	805	1.36	590
-20	998	1.49	670
-15	1221	1.61	756
-10	1473	1.74	848

Test Condition: Subcooling 3 K, Return Gas 20 °C.

PERFORMANCE CURVE

Ambient Temperature 32°C

Evaporating Temperature °C	Cooling Capacity W	Efficiency W/W	Consumo de Potencia W
-40	352	0.88	398
-30	565	1.07	526
-25	714	1.18	605
-20	890	1.28	693
-15	1091	1.39	787
-10	1315	1.48	886

Test Condition: Subcooling 3 K, Return Gas 20 °C.

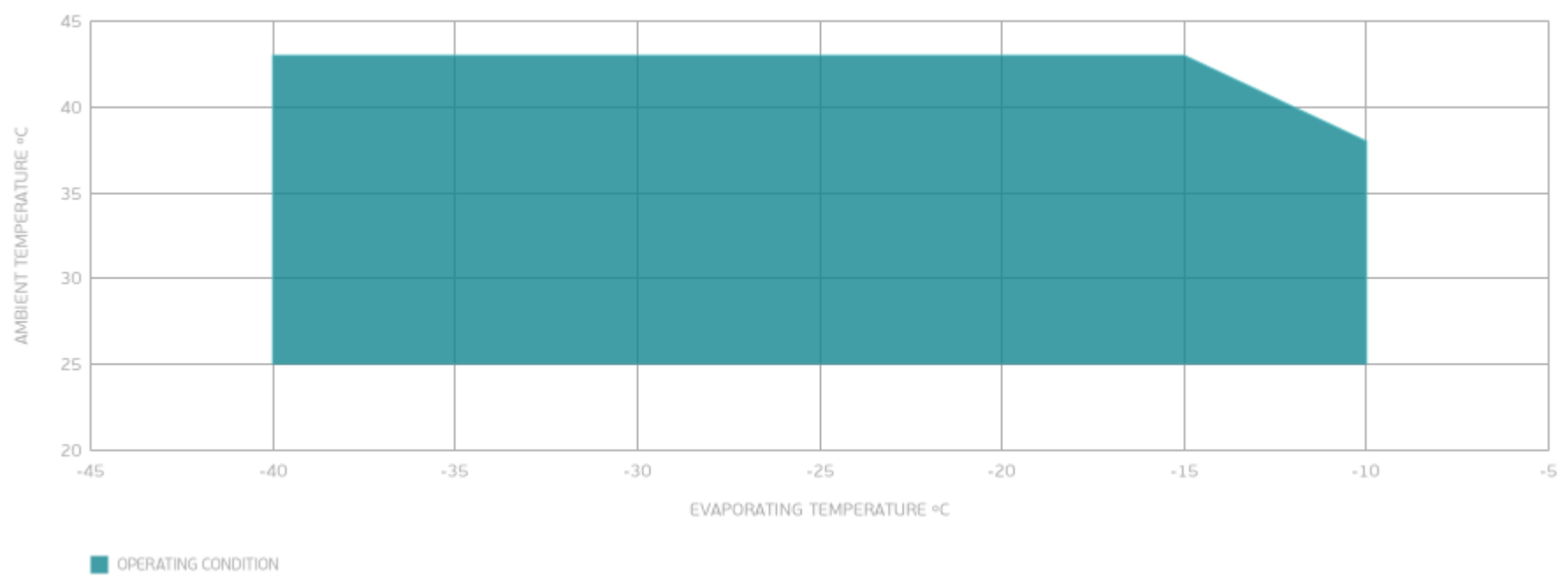
PERFORMANCE CURVE

Ambient Temperature 43°C

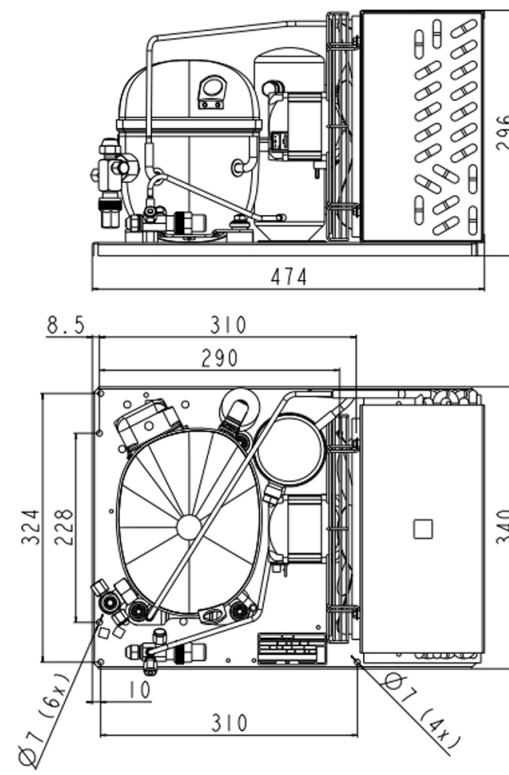
Evaporating Temperature °C	Cooling Capacity W	Efficiency W/W	Consumo de Potencia W
-40	226	0.59	385
-30	407	0.76	538
-25	527	0.84	630
-20	666	0.91	729
-15	823	0.99	835

Test Condition: Subcooling 3 K, Return Gas 20 °C.

ENVELOPE



EXTERNAL DIMENSIONS



WIRING DIAGRAM

