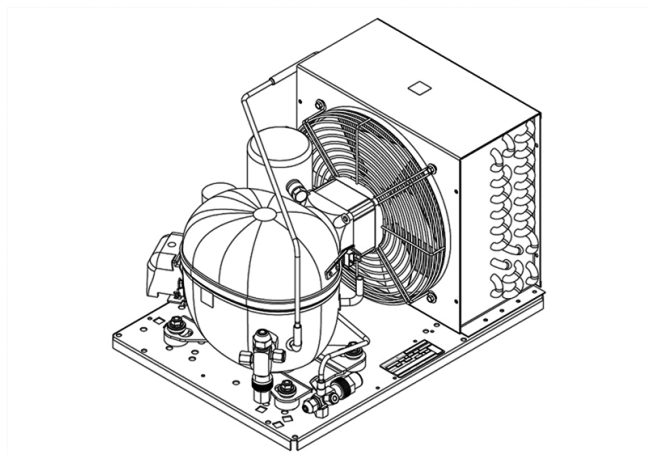


UNT2180GK



ENGINEERING CODE
503HA5612AA



REFRIGERANT
R-452A



POWER SUPPLY
220-240 V 50 Hz



APPLICATION
LBP



MOTOR TYPE
CSIR



STANDARD
EN13215_RG20



COOLING CAPACITY
562 W



EFFICIENCY
1.02 W/W

CE

ECODESIGN
COMPLIANT

DATA

GENERAL DATA

Model UNT2180GK

ACCESSORIES

Discharge valve SOLDER 1/4" 2110047

Suction valve SOLDER 3/8" 2110049

CONDENSING COMPONENTS

Compressor NT2180GK LBP

Condenser 4R11T 2451217

Refrigerant R-404A

Expansion Device C-V

Fan Blade Diameter 254

Fankit 16W 254/28/5B 1996579

MECHANICAL DATA

Air Flow	460 m ³ /h
Height	296 mm
Receiver	1.2 L
Shaft Power	16
Weight	28 Kg
Width	340 mm
Length	474 mm

PERFORMANCE

TESTED CONDITIONS

Tested Refrigerant	R-452A
Tested Application	LBP
Tested Standard	EN13215_RG20

RATED POINTS

Ambient Temperature °C	Evaporating Temperature °C	Cooling Capacity W	Efficiency W/W	Consumo de Potencia W
32	-35	562	1.02	553

Test Condition: Subcooling 3 K, Return Gas 20 °C.

PERFORMANCE CURVE

Ambient Temperature 25°C

Evaporating Temperature °C	Cooling Capacity W	Efficiency W/W	Consumo de Potencia W
-40	466	0.93	501
-30	750	1.24	606
-25	911	1.34	679
-20	1089	1.42	767
-15	1287	1.48	871
-10	1508	1.52	994

Test Condition: Subcooling 3 K, Return Gas 20 °C.

PERFORMANCE CURVE

Ambient Temperature 32°C

Evaporating Temperature °C	Cooling Capacity W	Efficiency W/W	Consumo de Potencia W
-40	434	0.90	484
-30	702	1.12	629
-25	859	1.21	713
-20	1036	1.29	806
-15	1235	1.36	909
-10	1462	1.43	1024

Test Condition: Subcooling 3 K, Return Gas 20 °C.

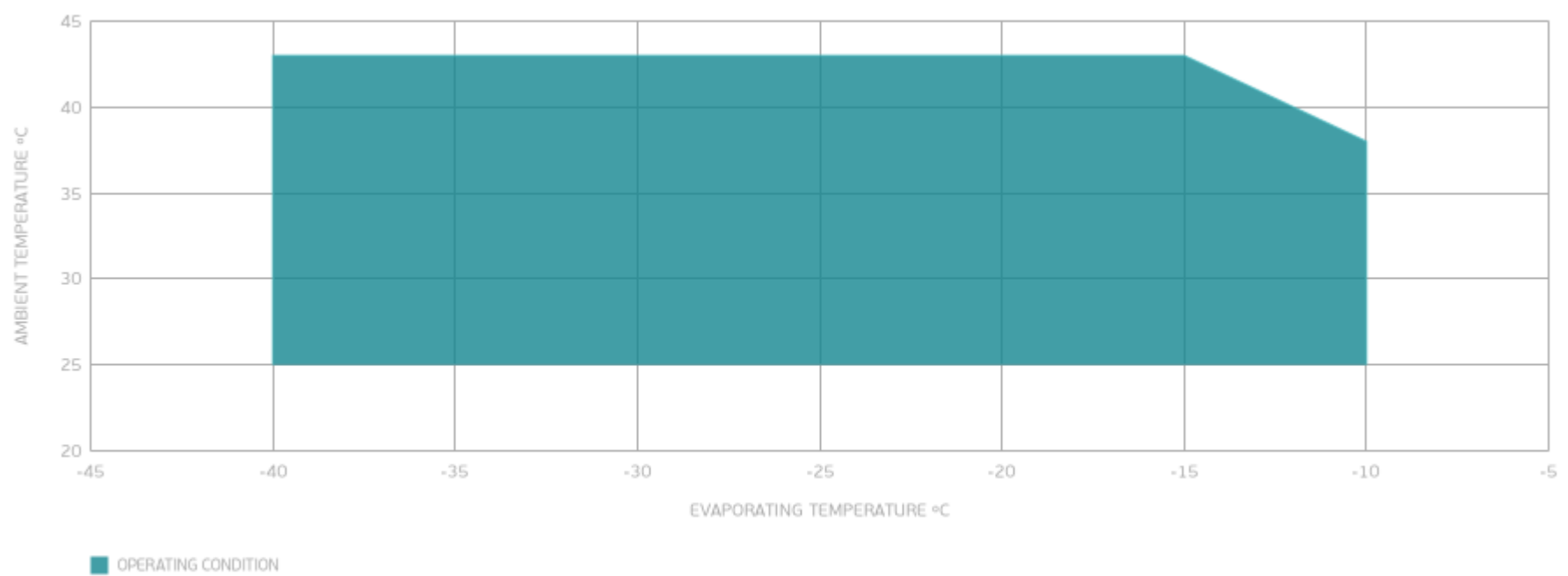
PERFORMANCE CURVE

Ambient Temperature 43°C

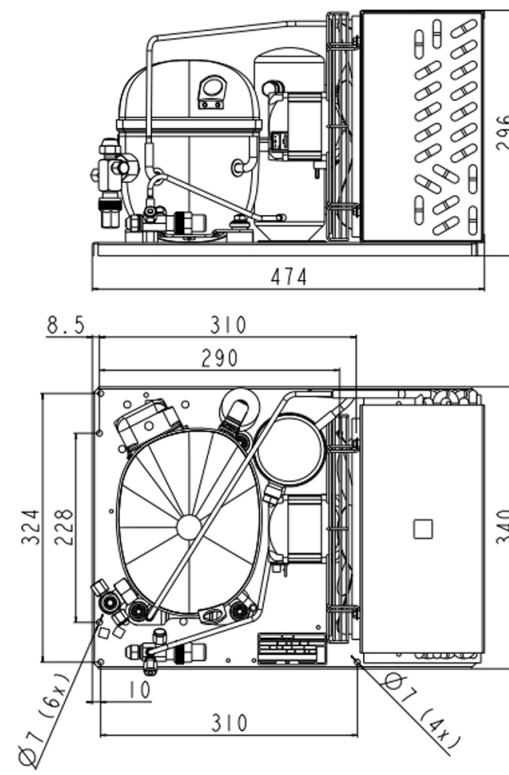
Evaporating Temperature °C	Cooling Capacity W	Efficiency W/W	Consumo de Potencia W
-40	302	0.68	446
-30	538	0.83	649
-25	686	0.92	748
-20	859	1.02	846
-15	1060	1.12	946

Test Condition: Subcooling 3 K, Return Gas 20 °C.

ENVELOPE



EXTERNAL DIMENSIONS



WIRING DIAGRAM

