



	TORO A-101/C	TORO A-102/C
+↑	2,90 m 9.5 ft	4,10 m 13.5 ft
⬇️/kg	170 kg 375 lb	150 kg 331 lb
-↓	1,75 m 5.7 ft	1,75 m 5.7 ft
⬇️/kg	67,5 Kg 149 lb	77,5 Kg 171 lb

TORO A-Range Details

TORO MATERIAL LIFTS ARE EQUIPPED WITH TWO SAFETY SYSTEMS



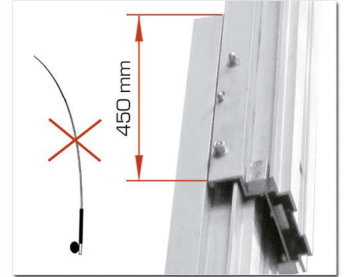
Auto-brake winches.
CE Machinery Directives



Internal Pendulum
Brake System (IPB)



Mast Section Unlocking
System (MSU)



More mast overlap.
Prevent fishing rod effect



Adjustable manoeuvring handles
with wheels.



Reinforced forks included.
(Detachable). Reversible &
Adjustable design.



2 Stabiliser braces
for greater lift stability.



Adjustable mast blocking
system for horizontal
transportation.



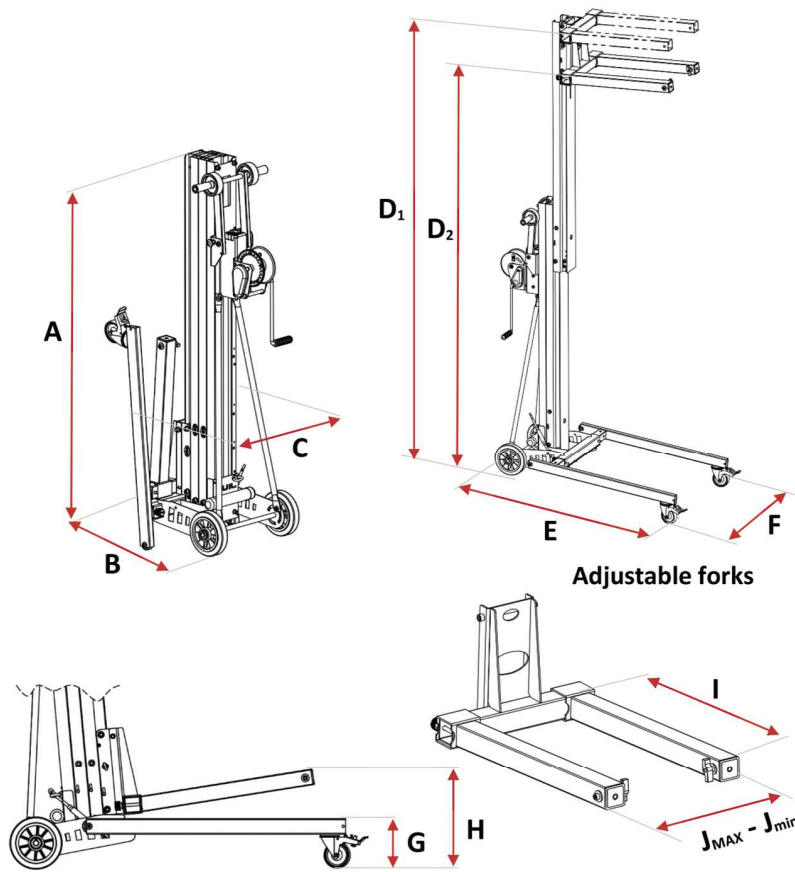
Adjustable base

Large wheels for easy
manoeuvring



COMPACT DESIGNS





Adjustable forks

TORO A - Range		TORO A-101/C	TORO A-102/C
STOWED			
Height (cm/ft)	A	175 / 5.7	175 / 5.7
Length (cm/ft)	B	75 / 2.5	75 / 2.5
Width (cm/ft)	C	64 / 2.1	64 / 2.1
WORKING MEASUREMENTS			
Maximum Forks up height (cm/ft)	D ₁	290 / 9.5	410 / 13.4
	Forks down	D ₂	265 / 8.6
Length (cm/ft)	E	133 / 4.3	133 / 4.3
Maximum width (cm/ft)	F _{MAX}	82 / 2.7	82 / 2.7
Minimum width (cm/ft)	F _{min}	64 / 2.1	64 / 2.1
Leg height (cm/ft)	G	19.5 / 0.64	19.5 / 0.64
Load height (cm/ft)	H	34 / 1.1	34 / 1.1
FORKS			
Length (cm/in)	I	66 / 26	66 / 26
Maximum width (cm/in)	J _{MAX}	43 / 16.9	43 / 16.9
Minimum width (cm/in)	J _{min}	30.5 / 12	30.5 / 12
Number of sections		2	3
Maximum load (Kg/lbs)		170 / 375	150 / 331
Weight (Kg/lbs)		67.5 / 149	77.5 / 171



HRT HORQUILLAS FORK



ACT-01 DISEÑO CURVO PIPE CRADLE



ACT-04 PLATAFORMA LOAD PLATFORM



***ACT-02** PROLONGADORES FORK EXTENSIONS



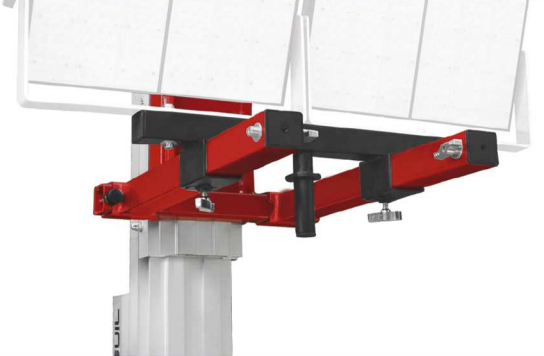
***ACT-05** PLUMA CON GANCHO LOAD HOOK ARM



ACT-06 PERSIANAS Y PUERTAS ENROLLABLES ROLLER DOOR & WINDOW SHUTTERS



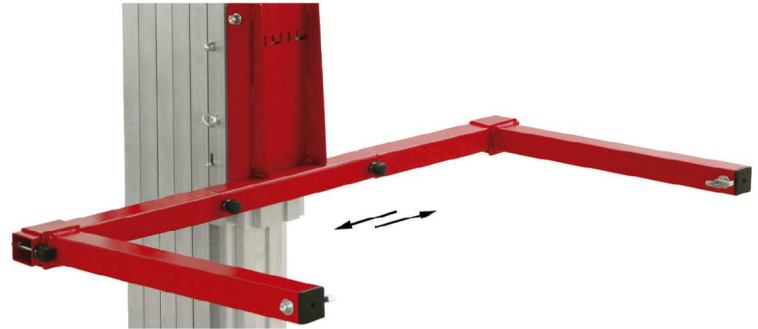
ACT-07 ADAPTADOR PARA ILUMINACIÓN FLOOD LIGHT ADAPTOR



***ACT-08** PLUMA CON 5 POSICIONES 5-POSITION BOOM ARM



***ACT-09** EXPANSOR DE HORQUILLAS FORK WIDENER



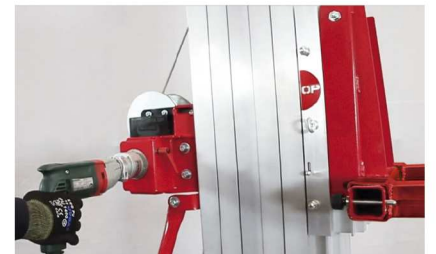
CONTRAPESOS Y BANDEJA COUNTERWEIGHTS & HOLDER



SISTEMA DE ELEVACIÓN ELÉCTRICO ELECTRIC LIFTING SYSTEM

***ELECTRIC**

2 Sistemas en 1 - Manual y Eléctrico
Práctico sistema que permite elevar la carga de manera eléctrica.
2 Systems in 1 - Manual & Electric
Practical system that allows you to raise the load electrically.



*Adaptador no válido para elevadores TORO Serie A

*This adaptor is not suitable for the A-Range towers.

APPLICATIONS

GUIL manufactures a wide range of innovative material lifts, adapters and accessories designed to cover the needs for a large variety of applications:

| HVAC

| GLASS

| AWNINGS & SHELTERS

| ROLLER SHUTTERS & BLINDS

| INSTALLATIONS

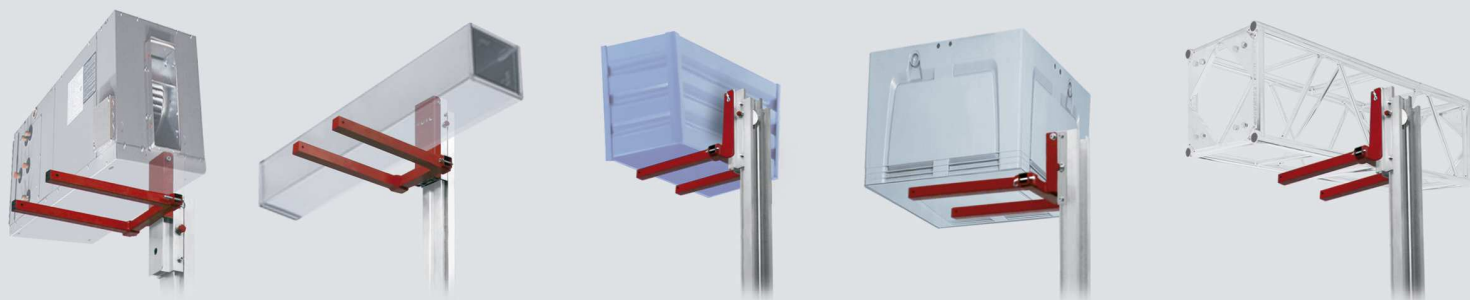
| MAINTENANCE WORK

| PIPING & DUCTS

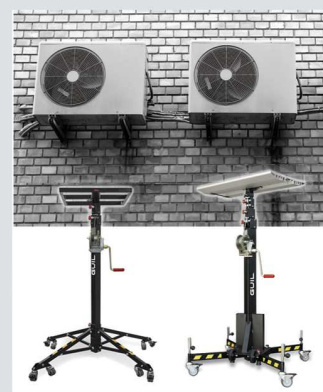
| METALWORK

| CARPENTRY

| EXHIBITION STANDS



CHOOSE A MODEL & LIFT YOUR LOAD



MADE IN SPAIN
www.guil-lifters.com



P.I. La Creu C/ Ismael Tomás Alacreu, 28-30 - CP 46250 L'Alcúdia (Valencia) SPAIN
Fax +34 962540833 Tel +34 962996500 info@guil.es

GUIL - YOUR EUROPEAN LIFTING TOWER MANUFACTURER

