



	TORO D-401	TORO D-402/C	TORO D-403/C	TORO D-404	TORO D-405/C	TORO D-406	TORO D-407
↑	3,55 m 11.6 ft	3,85 m 12.6 ft	5,00 m 16.4 ft	5,00 m 16.4 ft	6,00 m 19.7 ft	6,50 m 21.3 ft	8,00 m 26.2 ft
kg ↓	440 kg 970 lb	420 kg 926 lb	400 kg 882 lb	420 kg 926 lb	350 kg 772 lb	400 kg 882 lb	350 kg 772 lb
↓	1,99 m 6.5 ft	1,61 m 5.3 ft	1,61 m 5.3 ft	1,99 m 6.5 ft	1,61 m 5.3 ft	1,99 m 6.5 ft	1,99 m 6.5 ft
kg	152 Kg 335 lb	162 Kg 357 lb	178 Kg 392 lb	171 Kg 377 lb	194 Kg 428 lb	190 Kg 419 lb	207 Kg 456 lb

TORO D-Range Details

TORO MATERIAL LIFTS ARE EQUIPPED WITH TWO SAFETY SYSTEMS



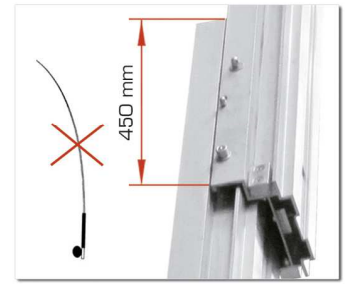
Auto-brake winch with double handle. CE Machinery Directives



Internal Pendulum Brake System (IPB)



Mast Section Unblocking System (MSU)



More mast overlap. Prevents fishing rod effect



Adjustable manoeuvring handle with Ø200 mm wheels included. (3 positions)



Reinforced forks included. (Detachable). Reversible & Adjustable design.



2 Stabiliser braces for greater lift stability.



Adjustable mast blocking system for horizontal transportation.



Spirit level

Folding side legs included



Legs can be inserted in the front or back of the tower for positioning close to walls.

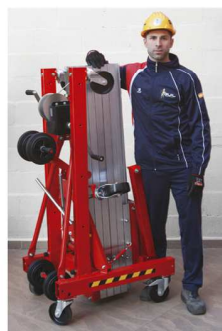


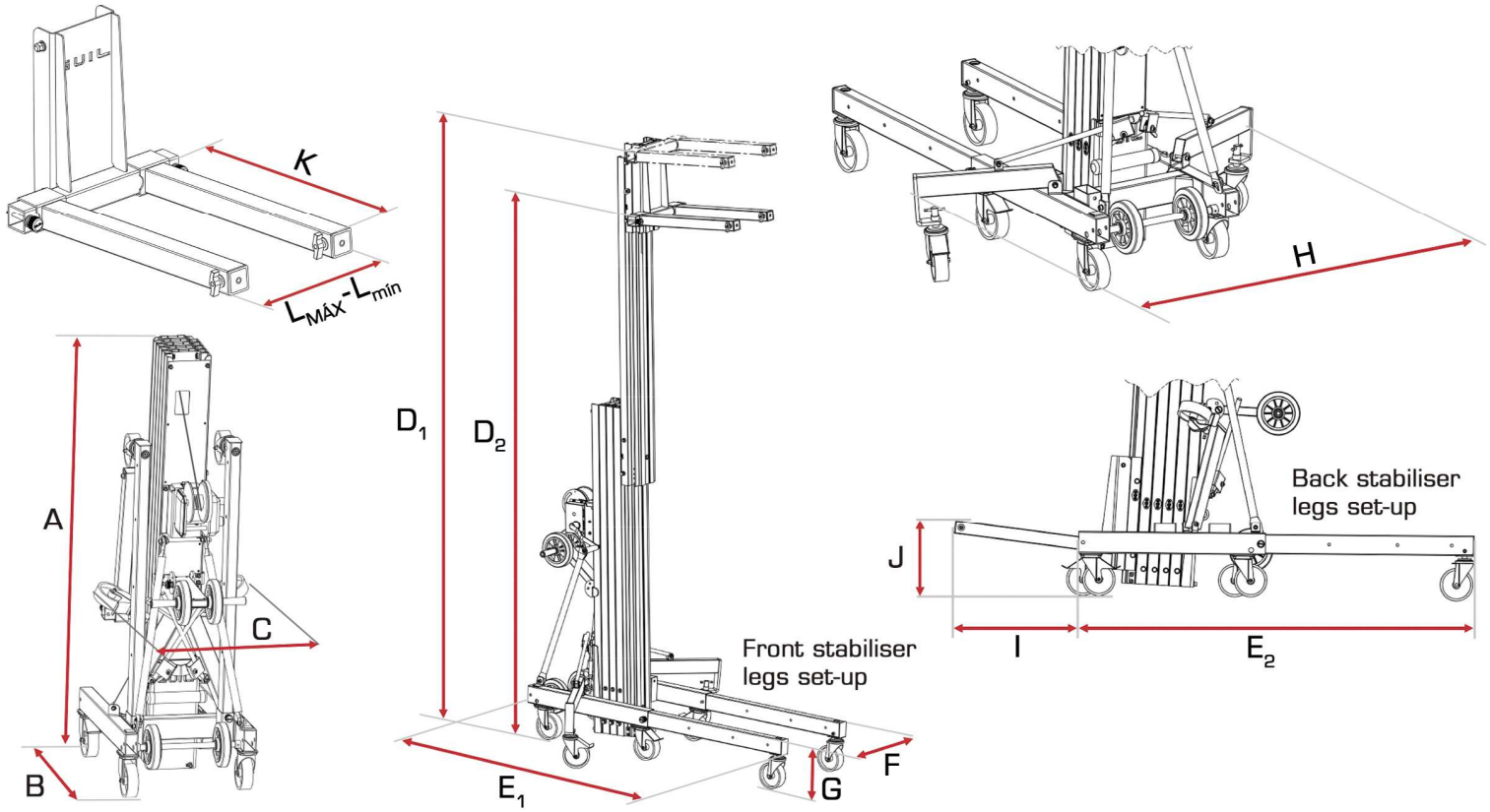
Adjustable legs

Compact designs and 12 wheels included for easy manoeuvring (Vertically and horizontally)



Ø150mm adjustable wheels for perfect levelling.





TORO D - Range		TORO D-401	TORO D-402/C	TORO D-403/C	TORO D-404	TORO D-405/C	TORO D-406	TORO D-407	
STOWED									
Height (cm/ft)	A	199 / 6.5	161 / 5.3	161 / 5.3	199 / 6.5	161 / 5.3	199 / 6.5	199 / 6.5	
Length (cm/ft)	B	95 / 3.1	95 / 3.1	95 / 3.1	95 / 3.1	95 / 3.1	95 / 3.1	95 / 3.1	
Width (cm/ft)	C	66 / 2.1	66 / 2.1	66 / 2.1	66 / 2.1	66 / 2.1	66 / 2.1	66 / 2.1	
WORKING MEASUREMENTS									
Maximum height (cm/ft)	Forks up	D ₁	355 / 11.7	385 / 12.6	500 / 16.4	500 / 16.4	600 / 19.7	650 / 21.3	800 / 26.2
	Forks down	D ₂	315 / 10.3	345 / 11.3	460 / 15.1	460 / 15.1	560 / 18.4	610 / 20	760 / 24.9
Length (cm/ft)	Front legs	E ₁	192 / 6.3	192 / 6.3	192 / 6.3	192 / 6.3	192 / 6.3	192 / 6.3	192 / 6.3
	Back legs	E ₂	183 / 6	183 / 6	183 / 6	183 / 6	183 / 6	183 / 6	183 / 6
Width (cm/ft)		F	66 / 2.1	66 / 2.1	66 / 2.1	66 / 2.1	66 / 2.1	66 / 2.1	66 / 2.1
Leg height (cm/ft)		G	28 / 0.9	28 / 0.9	28 / 0.9	28 / 0.9	28 / 0.9	28 / 0.9	28 / 0.9
Width with stabilisers unfolded (cm/ft)		H	147 / 4.8	147 / 4.8	147 / 4.8	147 / 4.8	147 / 4.8	147 / 4.8	147 / 4.8
Distance to the wall (cm/ft)		I	57 / 1.9	57 / 1.9	57 / 1.9	57 / 1.9	57 / 1.9	57 / 1.9	57 / 1.9
Load height (cm/ft)		J	33 / 1.1	33 / 1.1	33 / 1.1	33 / 1.1	33 / 1.1	33 / 1.1	33 / 1.1
FORKS									
Length (cm/in)		K	66 / 26	66 / 26	66 / 26	66 / 26	66 / 26	66 / 26	66 / 26
Maximum width (cm/in)		L _{MAX}	47.5 / 18.7	47.5 / 18.7	47.5 / 18.7	47.5 / 18.7	47.5 / 18.7	47.5 / 18.7	47.5 / 18.7
Minimum width (cm/in)		L _{min}	35.5 / 14	35.5 / 14	35.5 / 14	35.5 / 14	35.5 / 14	35.5 / 14	35.5 / 14
Number of sections		2	3	4	3	5	4	5	
Maximum load (Kg/lbs)		440 / 970	420 / 926	400 / 882	420 / 926	350 / 772	400 / 882	350 / 772	
Weight (Kg/lbs)		152 / 335	162 / 357	178 / 392	171 / 377	192 / 423	190 / 419	207 / 456	

HRT HORQUILLAS FORK



ACT-01 DISEÑO CURVO PIPE CRADLE



ACT-04 PLATAFORMA LOAD PLATFORM



***ACT-02** PROLONGADORES FORK EXTENSIONS



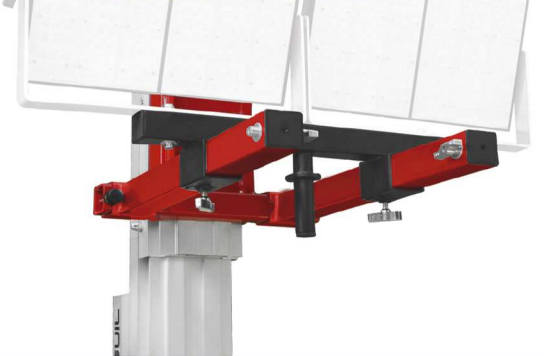
***ACT-05** PLUMA CON GANCHO LOAD HOOK ARM



ACT-06 PERSIANAS Y PUERTAS ENROLLABLES ROLLER DOOR & WINDOW SHUTTERS



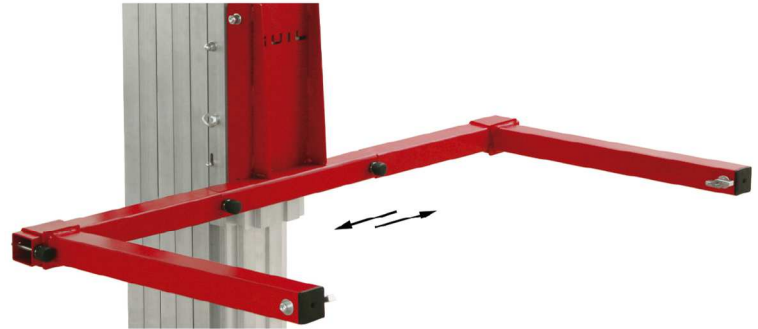
ACT-07 ADAPTADOR PARA ILUMINACIÓN FLOOD LIGHT ADAPTOR



***ACT-08** PLUMA CON 5 POSICIONES 5-POSITION BOOM ARM



***ACT-09** EXPANSOR DE HORQUILLAS FORK WIDENER



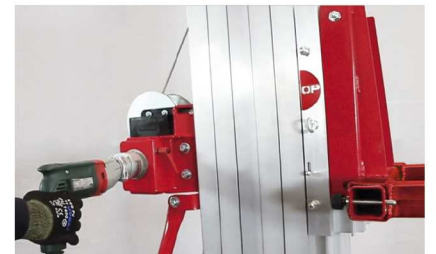
CONTRAPESOS Y BANDEJA COUNTERWEIGHTS & HOLDER



SISTEMA DE ELEVACIÓN ELÉCTRICO ELECTRIC LIFTING SYSTEM

***ELECTRIC**

2 Sistemas en 1 - Manual y Eléctrico
Práctico sistema que permite elevar la carga de manera eléctrica.
2 Systems in 1 - Manual & Electric
Practical system that allows you to raise the load electrically.



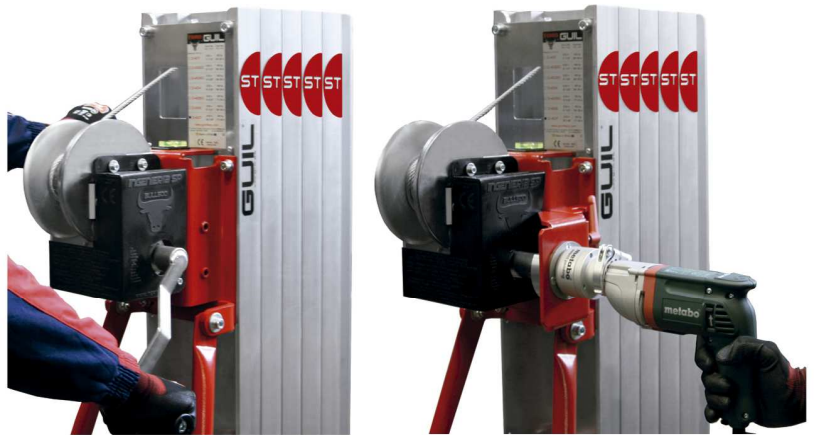
*Adaptador no válido para elevadores TORO Serie A

*This adaptor is not suitable for the A-Range towers.

Electric Lifting System for TORO Lifters (B - C - D Ranges)

Practical and very safe system that gives the option to raise and lower the TORO material lifts electrically (ranges B, C and D); converting the manual towers into electric towers.

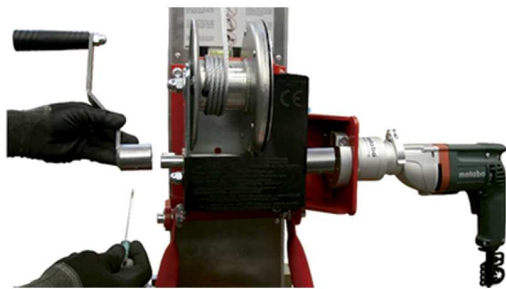
The 'ELECTRIC' system is a very useful accessory which allows you to quickly and effortlessly raise the TORO lifters guaranteeing utmost safety at all times.



The accessory is made up of a 750W METABO drill and an adaptor to secure it to the hand winch on the lifter. The adaptor ensures a firm fix of the drill so that the user is not required to hold the drill in place. This detail not only makes it effortless to use but also prevents possible risk of bodily injuries.

The 'ELECTRIC' system is installed quickly and easily and has the following references depending on the tower it will be used with:

- TORO B-Range lifters – ref. ELECTRIC B
- TORO C-Range lifters – ref. ELECTRIC C
- TORO D-Range lifters – ref. ELECTRIC D



NOTE: When this electric system is used the TORO D-Range towers have a maximum load capacity of 350 kg.

APPLICATIONS

GUIL manufactures a wide range of innovative material lifts, adapters and accessories designed to cover the needs for a large variety of applications:

| HVAC

| GLASS

| AWNINGS & SHELTERS

| ROLLER SHUTTERS & BLINDS

| INSTALLATIONS

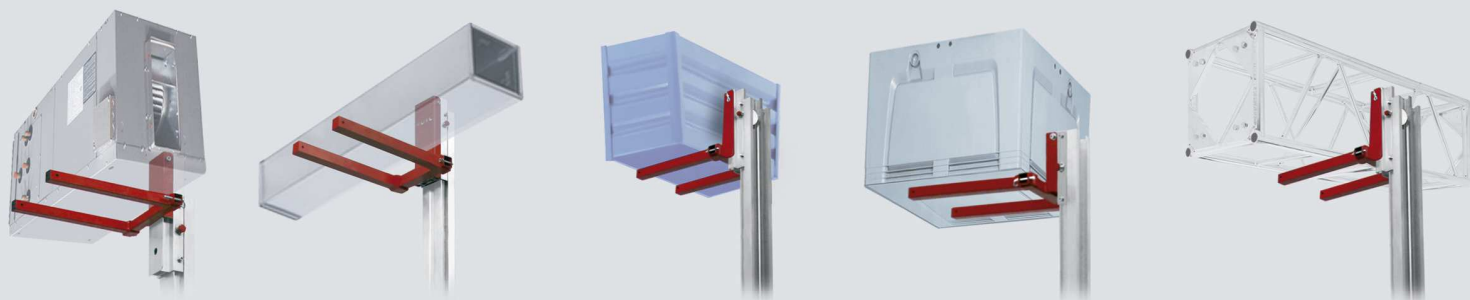
| MAINTENANCE WORK

| PIPING & DUCTS

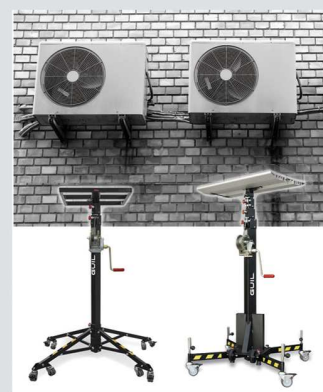
| METALWORK

| CARPENTRY

| EXHIBITION STANDS



CHOOSE A MODEL & LIFT YOUR LOAD



MADE IN SPAIN
www.guil-lifters.com



P.I. La Creu C/ Ismael Tomás Alacreu, 28-30 - CP 46250 L'Alcúdia (Valencia) SPAIN
Fax +34 962540833 Tel +34 962996500 info@guil.es

GUIL - YOUR EUROPEAN LIFTING TOWER MANUFACTURER

