

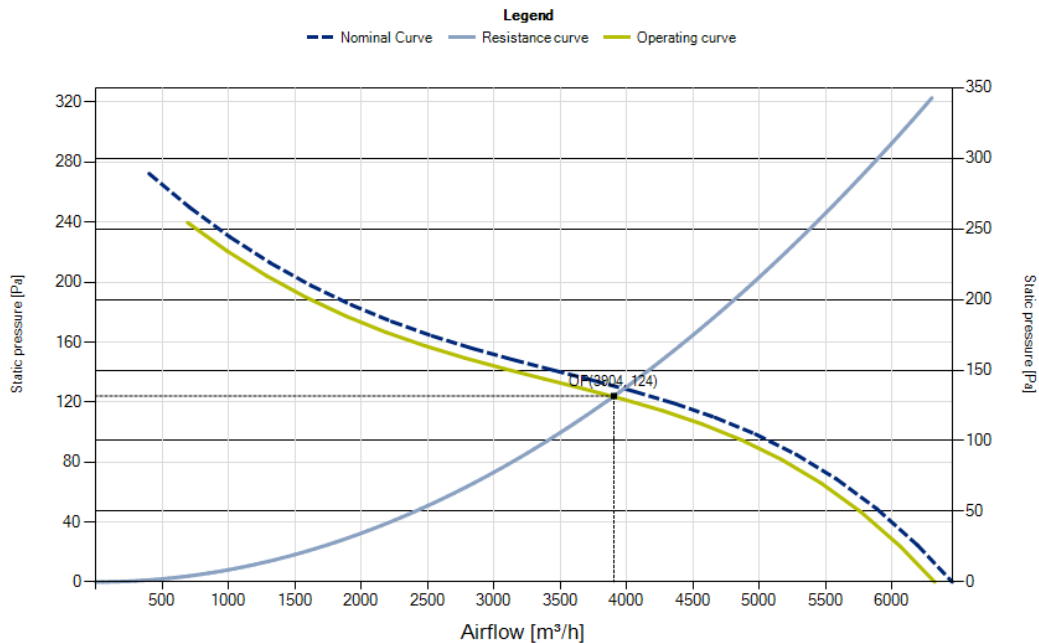
R10R-45APB-ES50B-09C05

EC Axial Fans with

Ordering code: 0310-4-0129

Operating Point		Nominal data		Erp Data	
Air flow [m ³ /h]	3904	Phase [~]	1	Overall efficiency [%]	48.3
Static pressure [Pa]	124	Voltage [V]	230 / 230	Measurement cat.	A
Density [kg/m ³]	1.2	Voltage range [V]	200-240	Efficiency category	static
Total pressure [Pa]	152	Frequency [Hz]	50 / 60	Efficiency grade N	57.8
Rotation speed [1/min]	1256	Input power [W]	300 / 300	Variable speed drive	INTEGRATED
Input power [W]	324	Input current [A]	2.05 / 2.05	Power input [kW]	0.32
Current [A]	2.19	Nominal speed [rpm]	1280 / 1280	Airflow [m ³ /h]	3904
Total efficiency [%]	51	Min. ambient temp. [°C]	-25	Pressure drop [Pa]	131
Static efficiency [%]	42	Max. ambient temp. [°C]	65	Rotational Speed [rpm]	1281
Sound power Outlet [dB]	72	Protection class	IP54	Specific ratio	1.00
Weighted sound power Outlet [dB(A)]	64	Insulation class	130		
Sound power inlet [dB]	0	Capacitor [μF/450V]	N / A		
Weighted sound power inlet [dB(A)]	0	K. Value	N / A		
Sound pressure [dB]	53	Connection	N / A		
Weighted sound pressure [dB(A)]	51	Weight [Kg]	5.3		

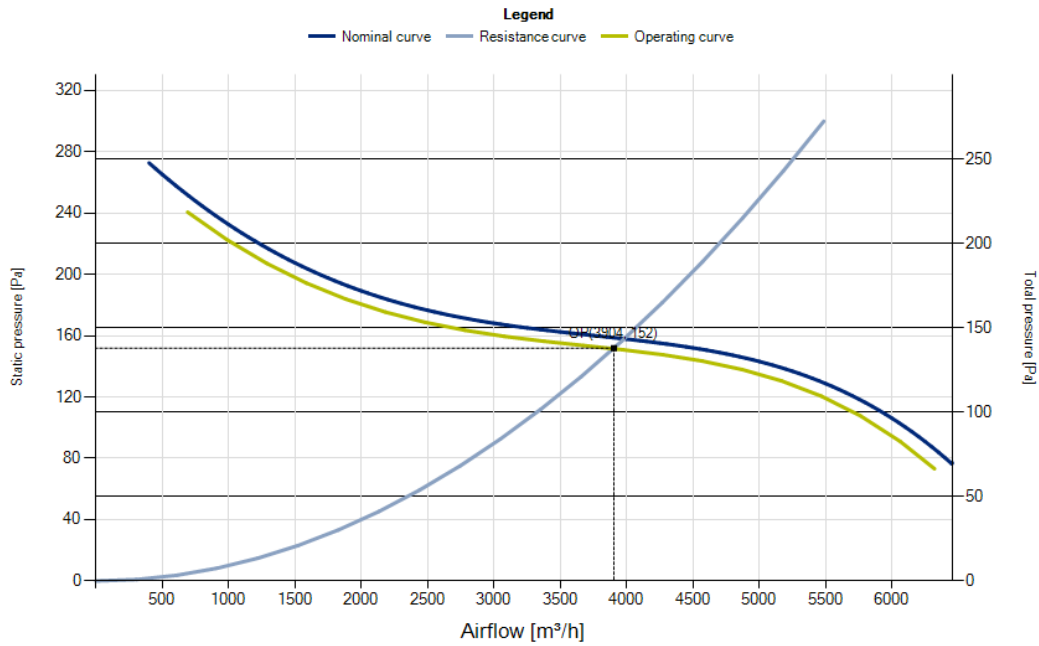
Static pressure



Measured according to ISO 5801, installation type A. Measured in full bell mouth without guard grill.

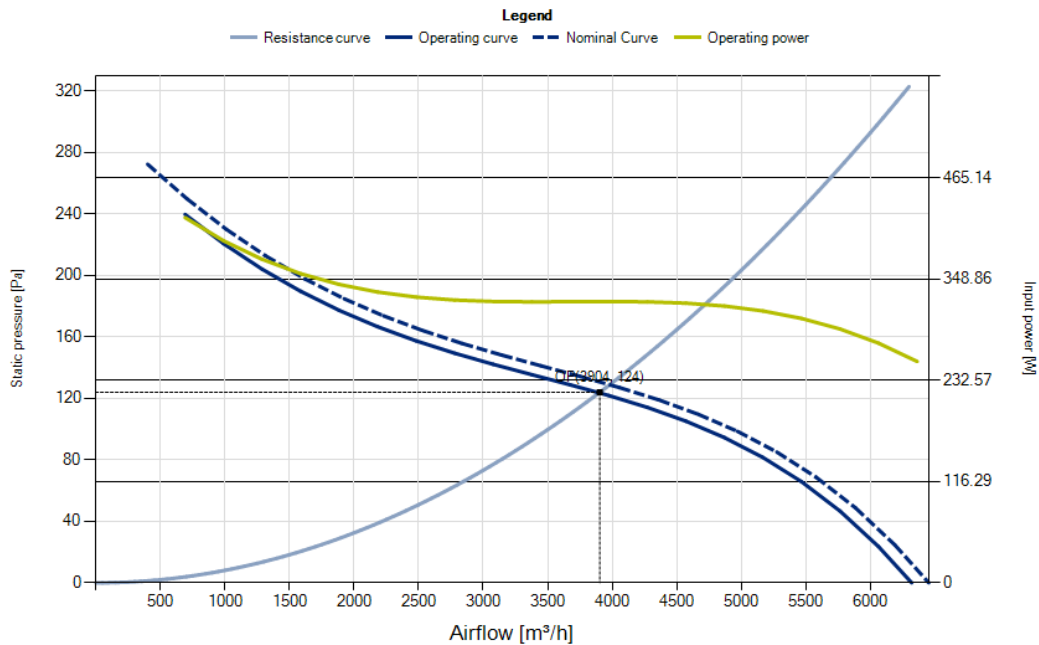


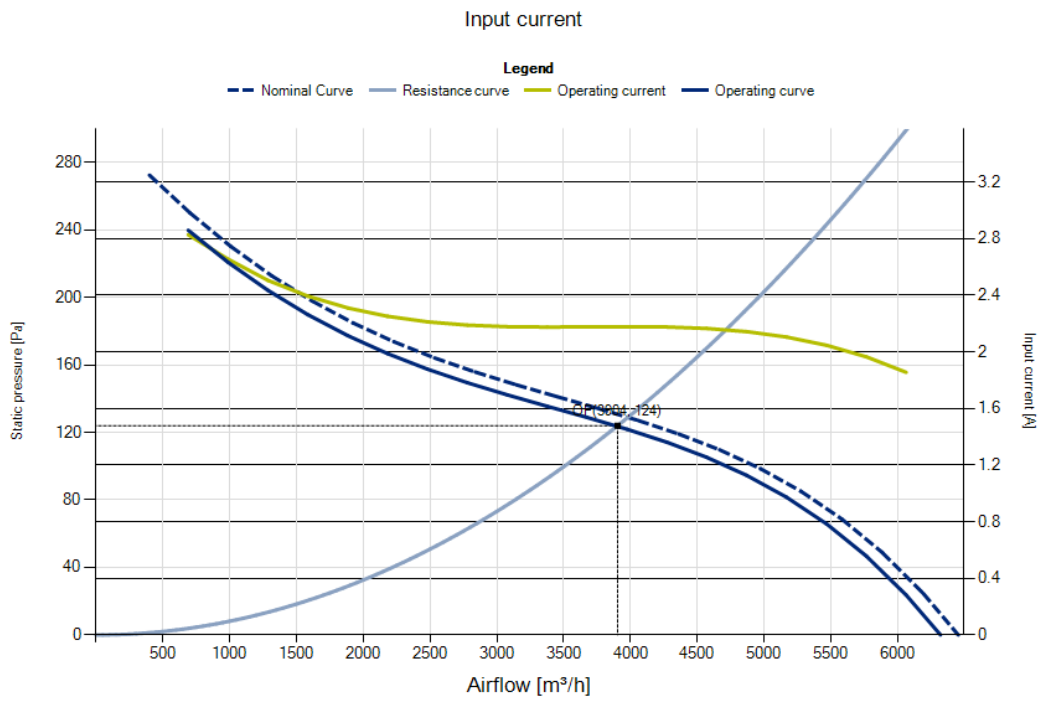
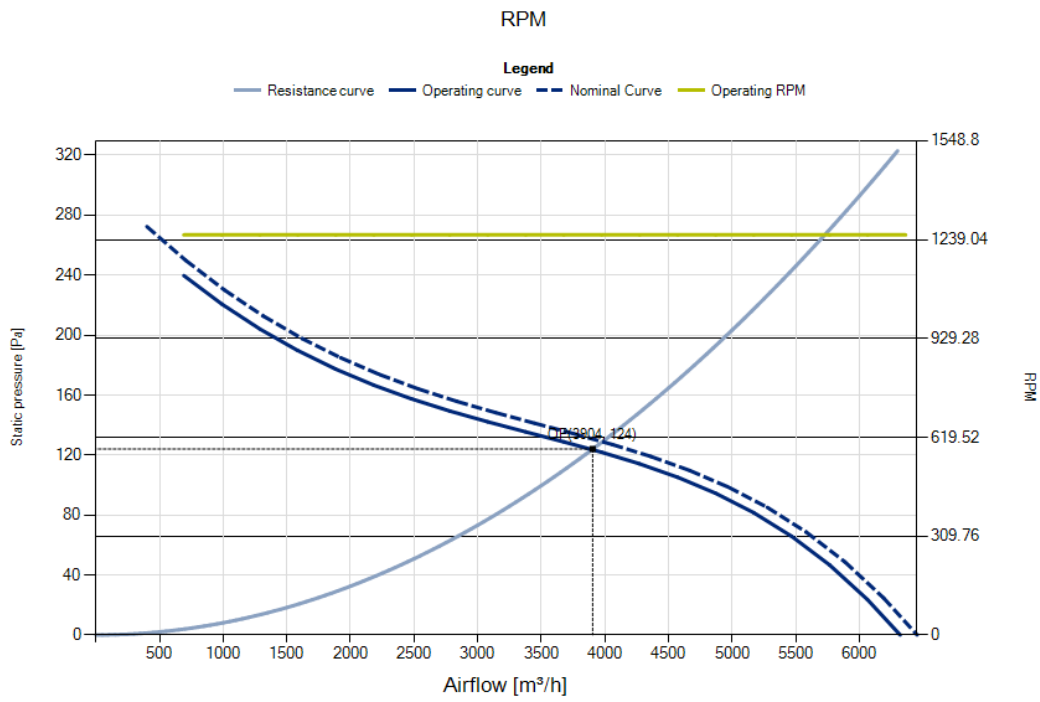
Total pressure



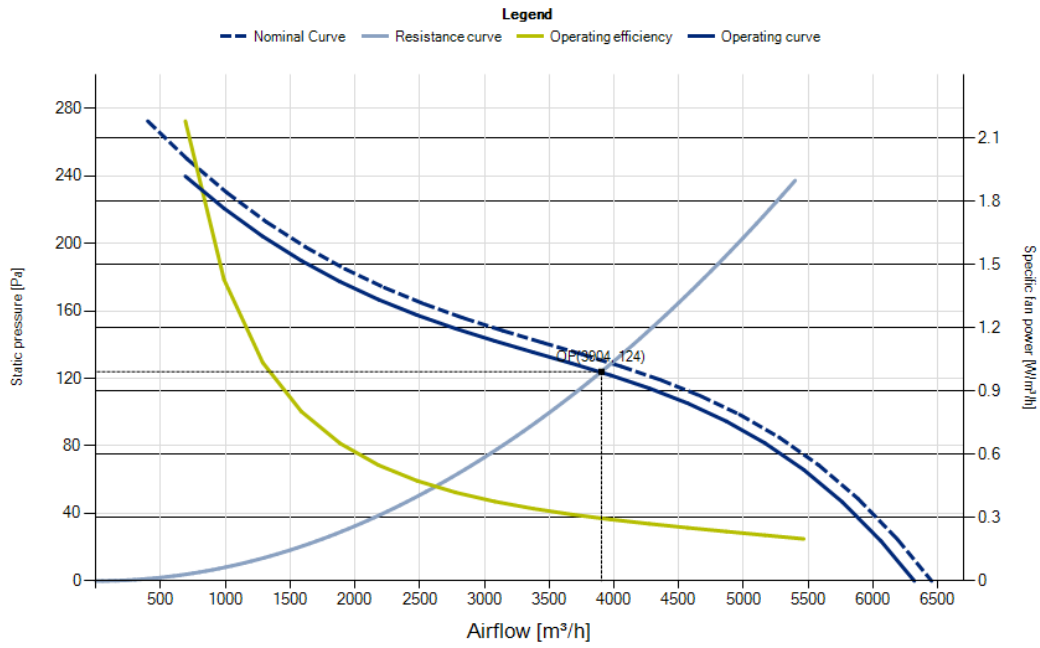
Measured according to ISO 5801, installation type A. Measured in full bell mouth without guard grill.

Input power

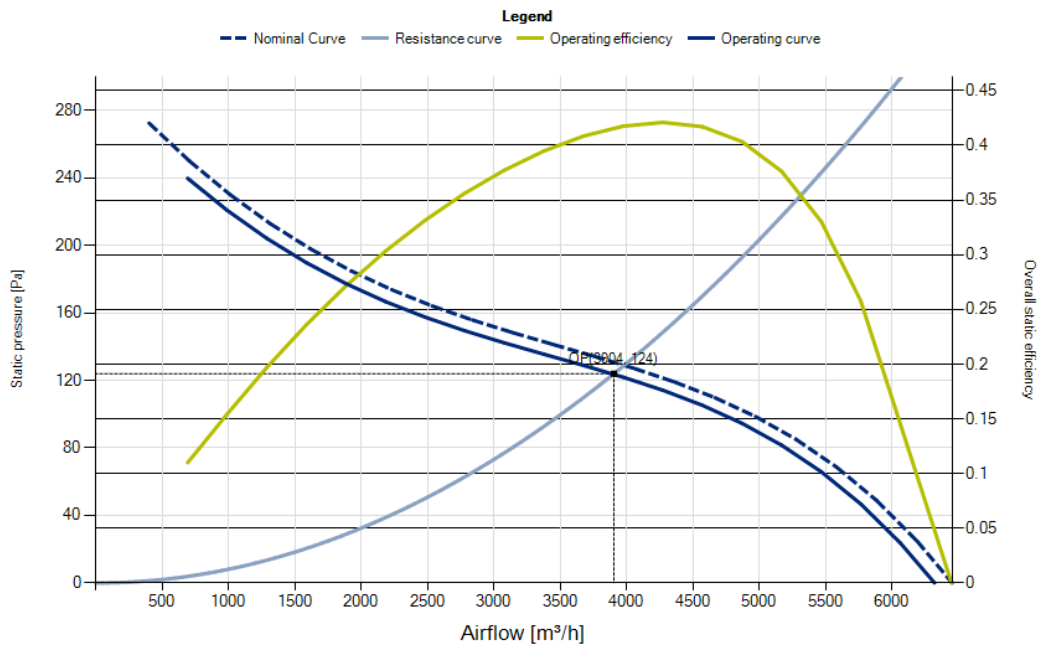




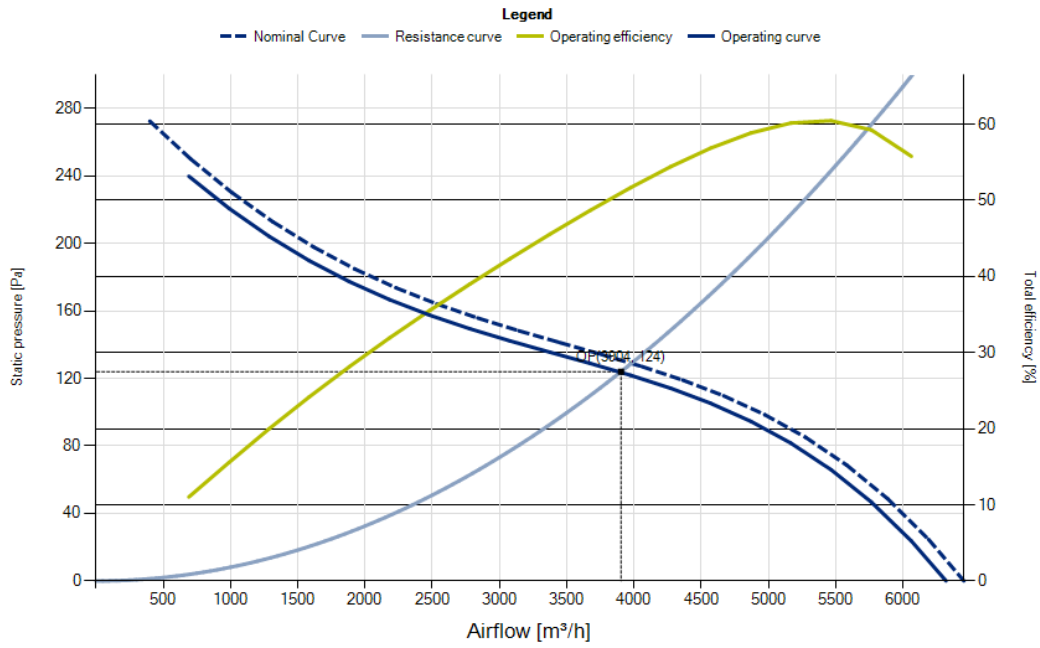
Specific fan power



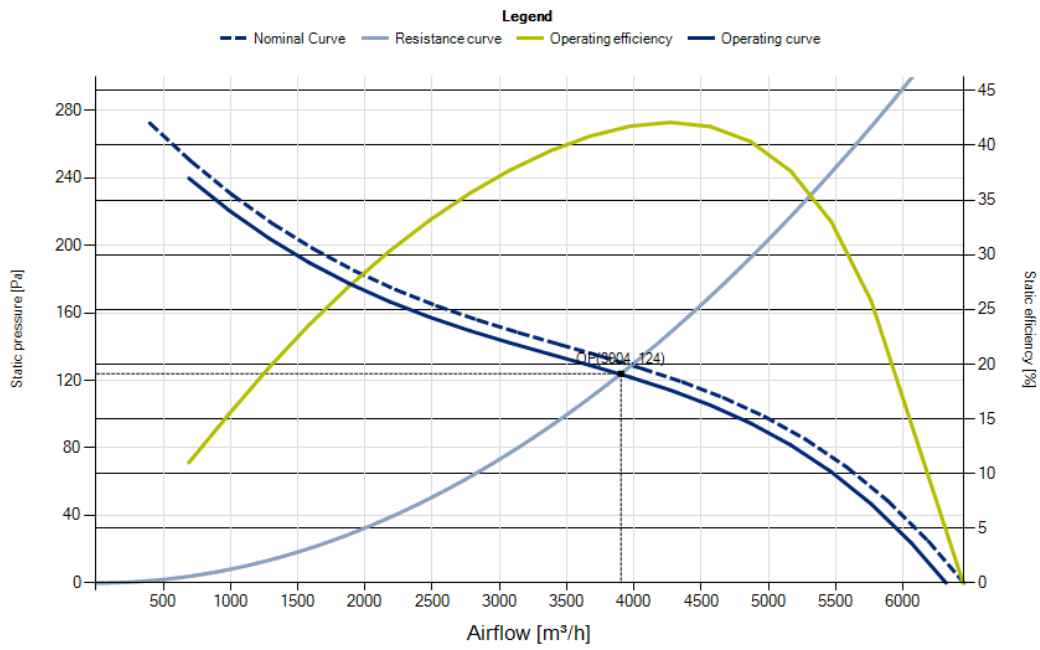
Overall static efficiency



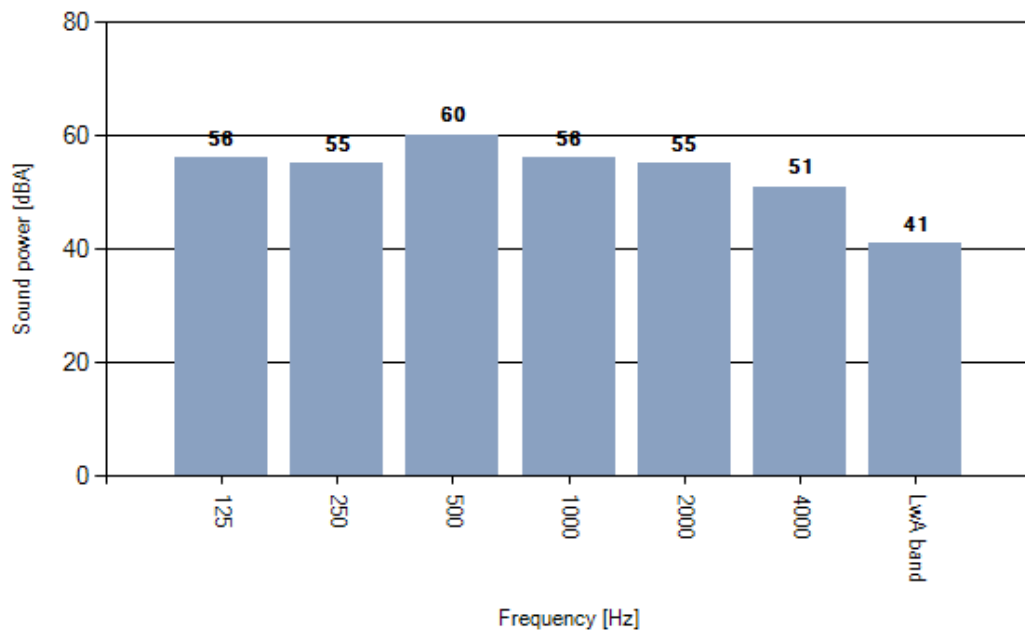
Total efficiency



Static efficiency



Weighted octave sound power spectrum Outlet



Measured according to ISO 3744 and ISO 13347, installation type A. Measured in full bell mouth without guard grill. The value given may vary according to actual installation of the unit.