

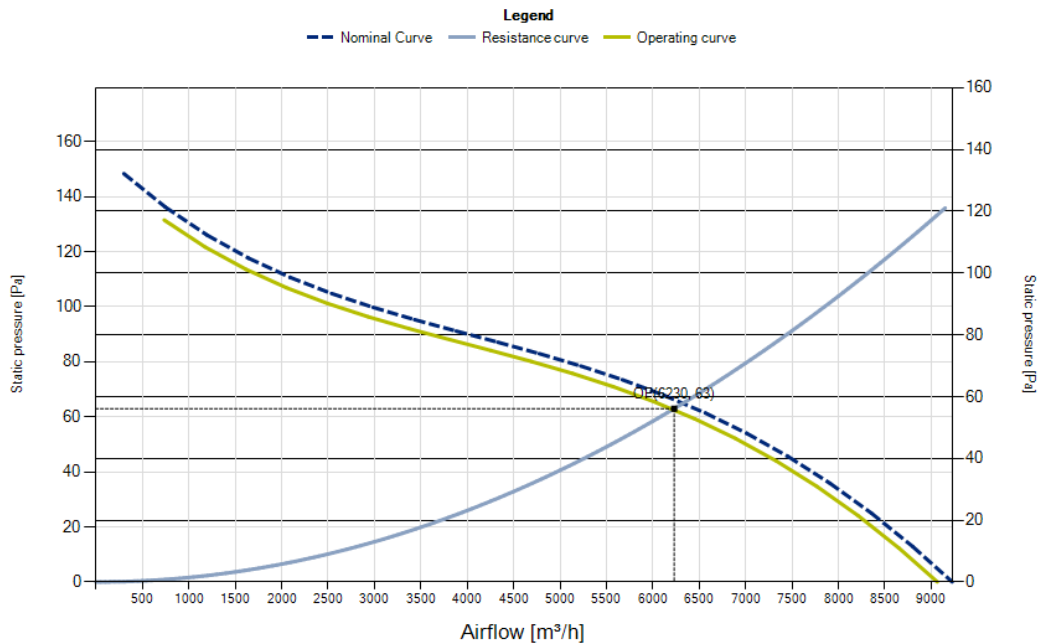
## R10R-63LPS-ES50B-03C11

EC Axial Fans with

Ordering code: 0310-4-0139

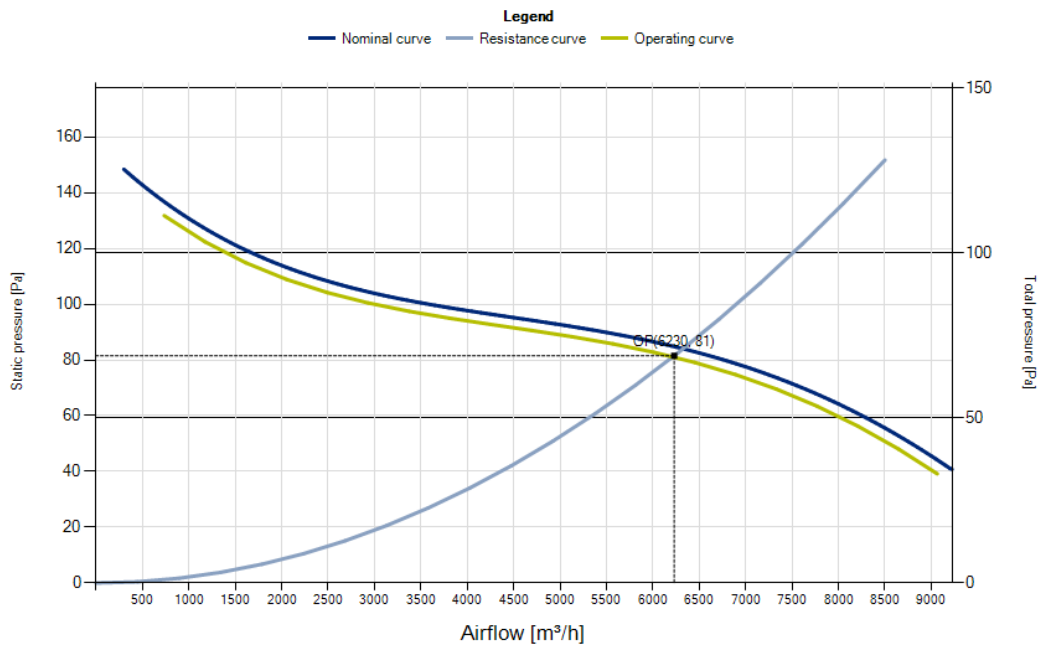
Operating Point		Nominal data		Erp Data	
Air flow [m3/h]	6230	Phase [~]	1	Overall efficiency [%]	47.3
Static pressure [Pa]	63	Voltage [V]	230 / 230	Measurement cat.	A
Density [kg/m3]	1.2	Voltage range [V]	230-240	Efficiency category	static
Total pressure [Pa]	81	Frequency [Hz]	50 / 60	Efficiency grade N	57.2
Rotation speed [1/min]	758	Input power [W]	250 / 250	Variable speed drive	INTEGRATED
Input power [W]	262	Input current [A]	1.65 / 1.65	Power input [kW]	0.26
Current [A]	1.69	Nominal speed [rpm]	770 / 770	Airflow [m3/h]	6230
Total efficiency [%]	54	Min. ambient temp. [°C]	-25	Pressure drop [Pa]	67
Static efficiency [%]	42	Max. ambient temp. [°C]	55	Rotational Speed [rpm]	774
Sound power Outlet [dB]	69	Protection class	IP54	Specific ratio	1.00
Weighted sound power Outlet [dB(A)]	64	Insulation class	130		
Sound power inlet [dB]	0	Capacitor [µF/450V]	0.00		
Weighted sound power inlet [dB(A)]	0	K. Value	0		
Sound pressure [dB]	53	Connection	0 / 0		
Weighted sound pressure [dB(A)]	52	Weight [Kg]	6.4		

Static pressure



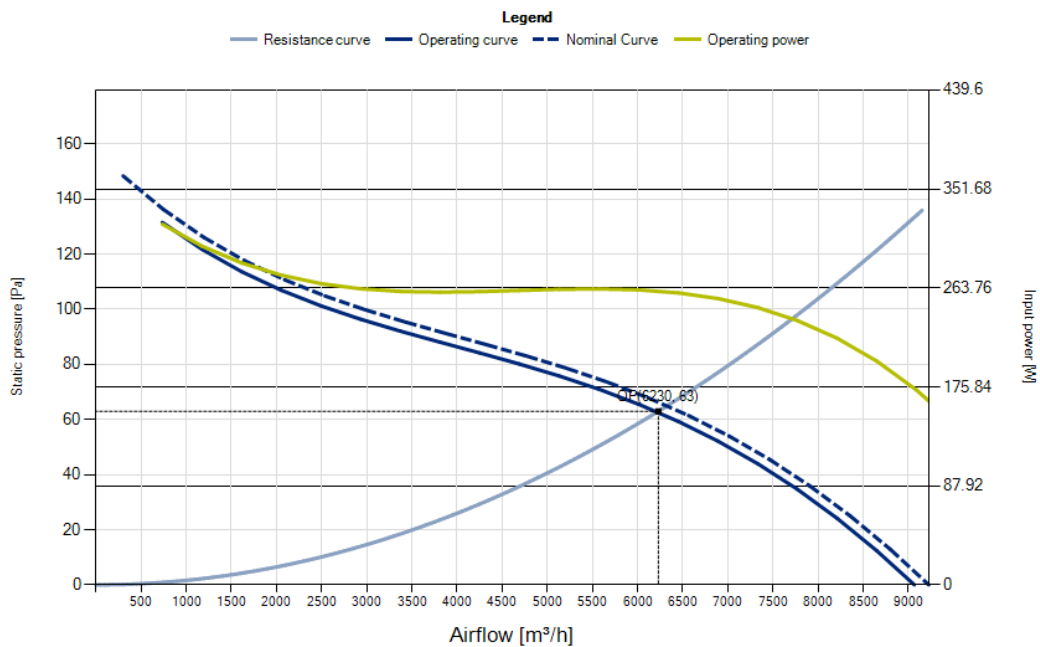
Measured according to ISO 5801, installation type A. Measured in full bell mouth without guard grill.

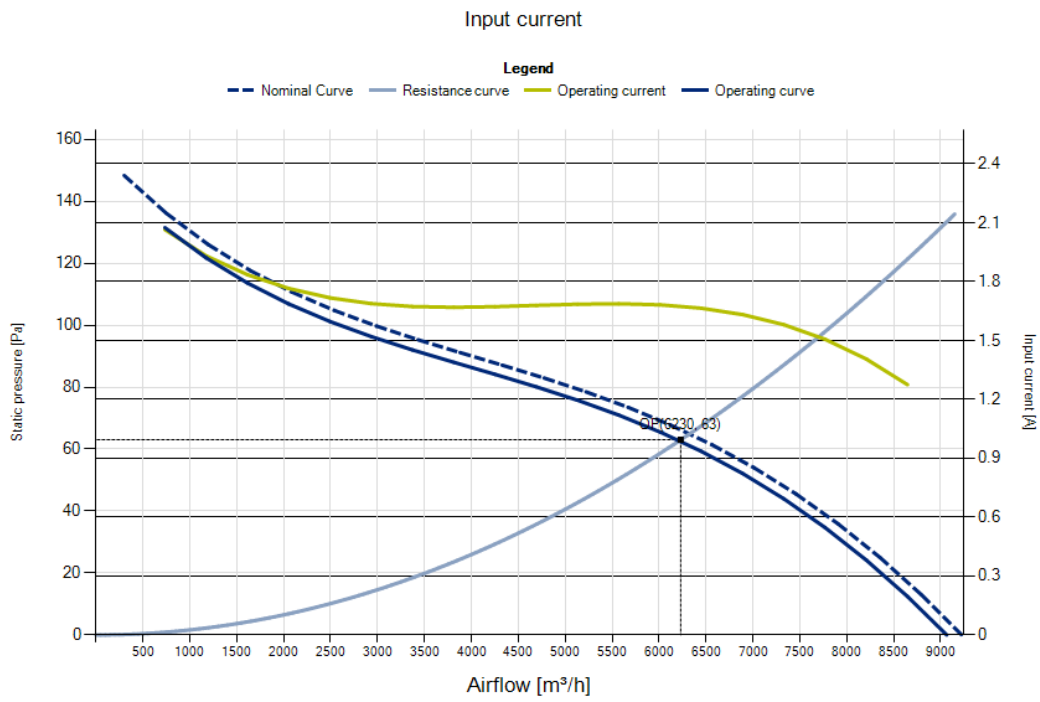
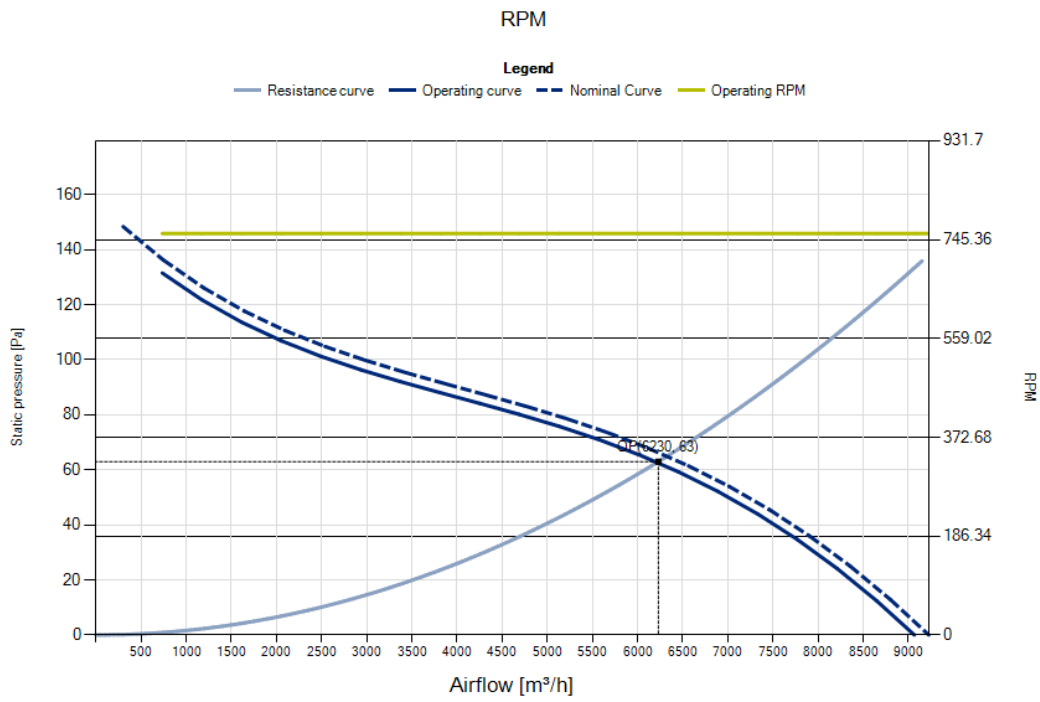
### Total pressure



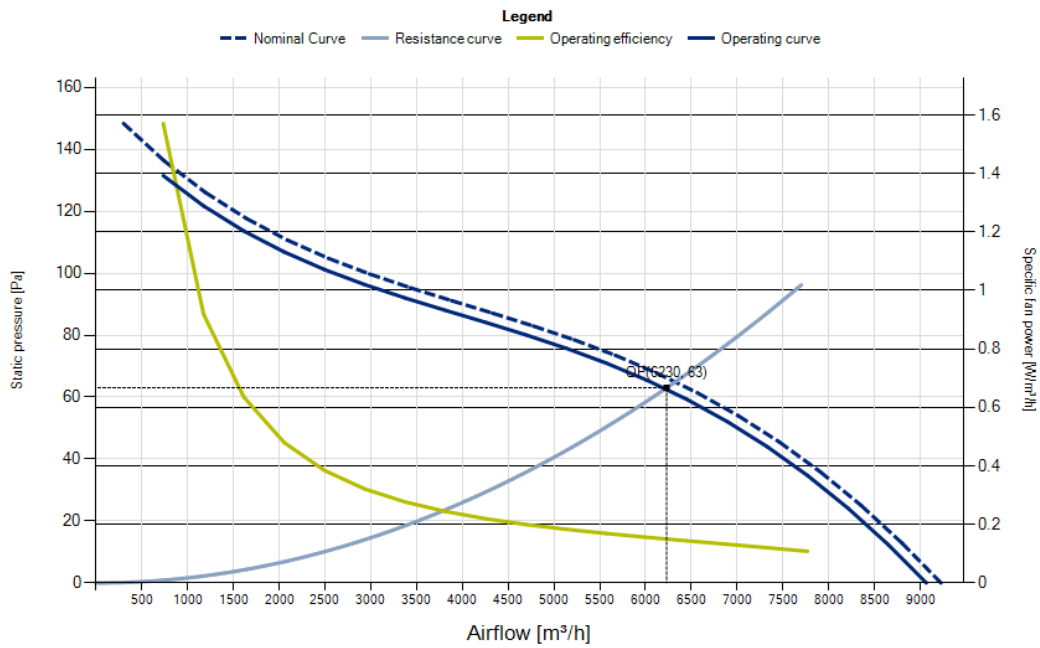
Measured according to ISO 5801, installation type A. Measured in full bell mouth without guard grill.

### Input power

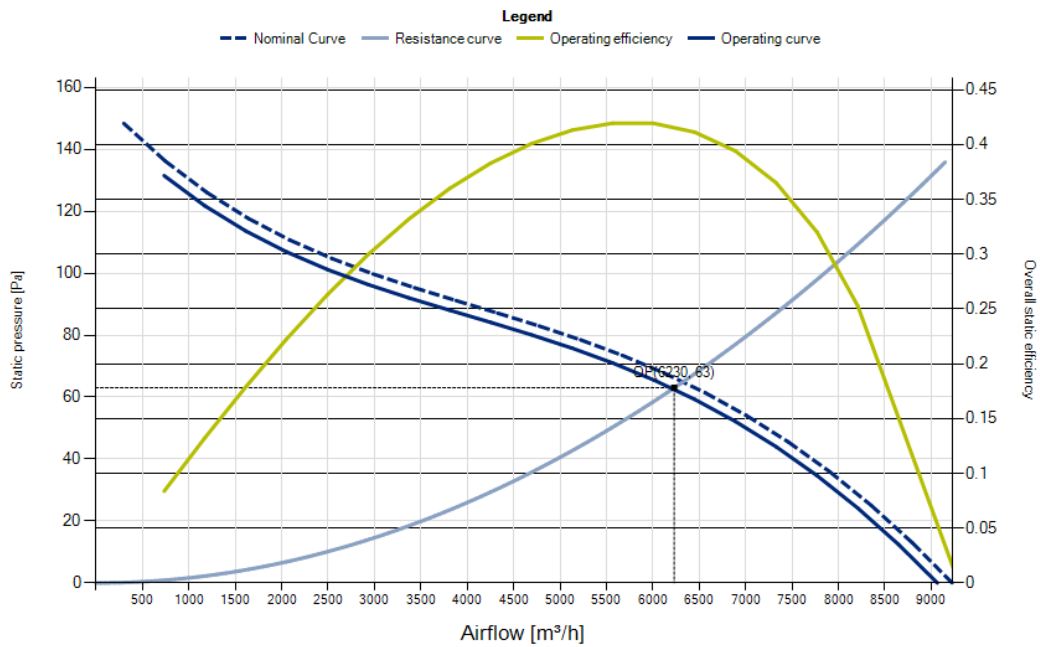




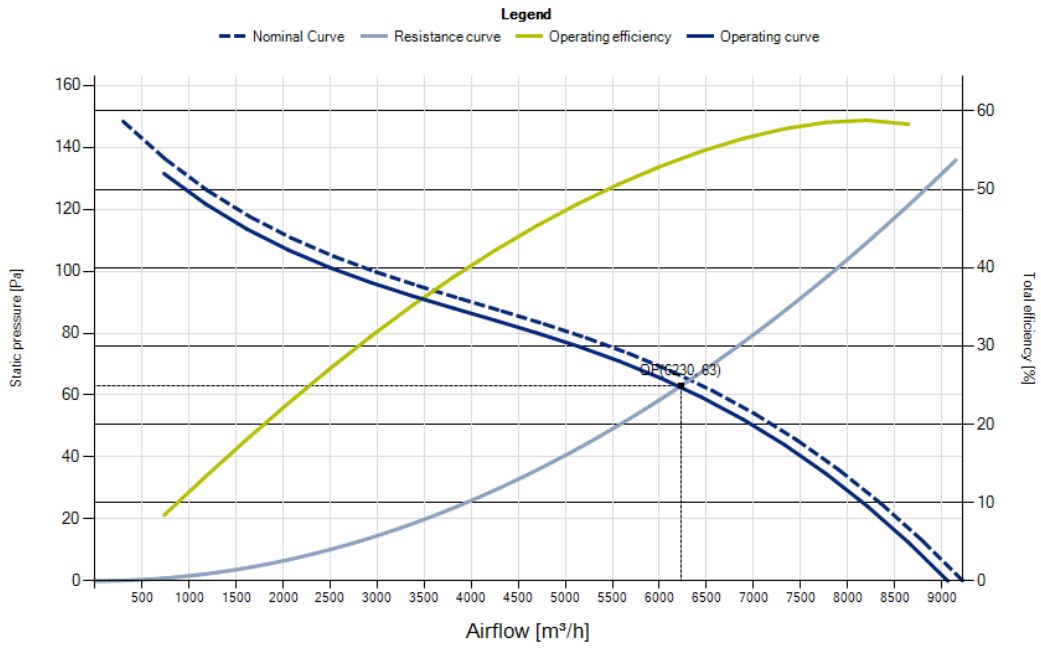
### Specific fan power



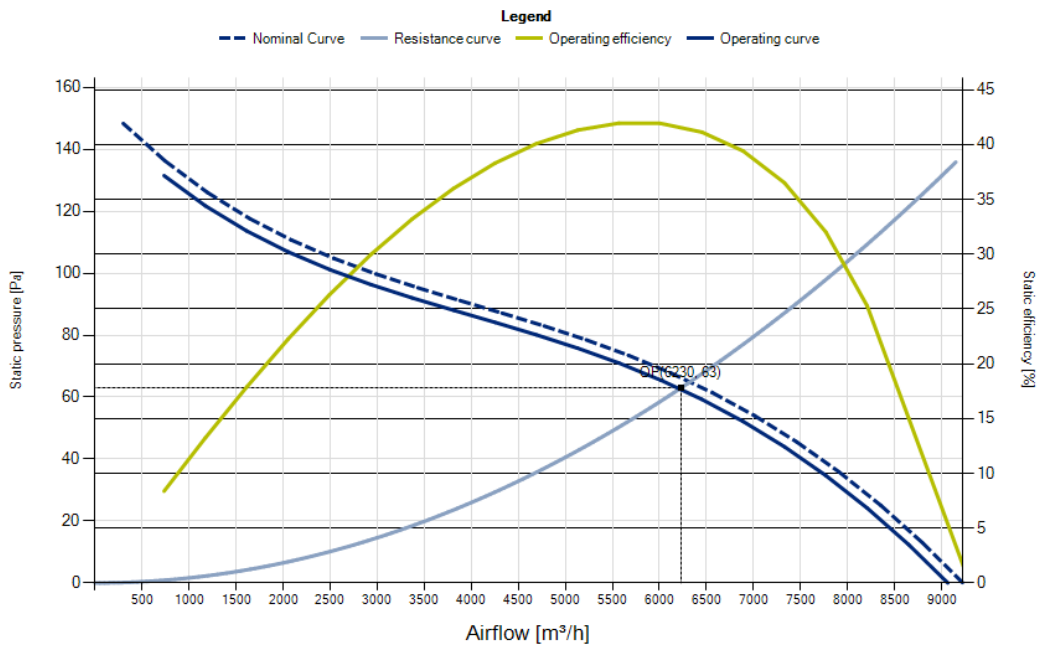
### Overall static efficiency



### Total efficiency

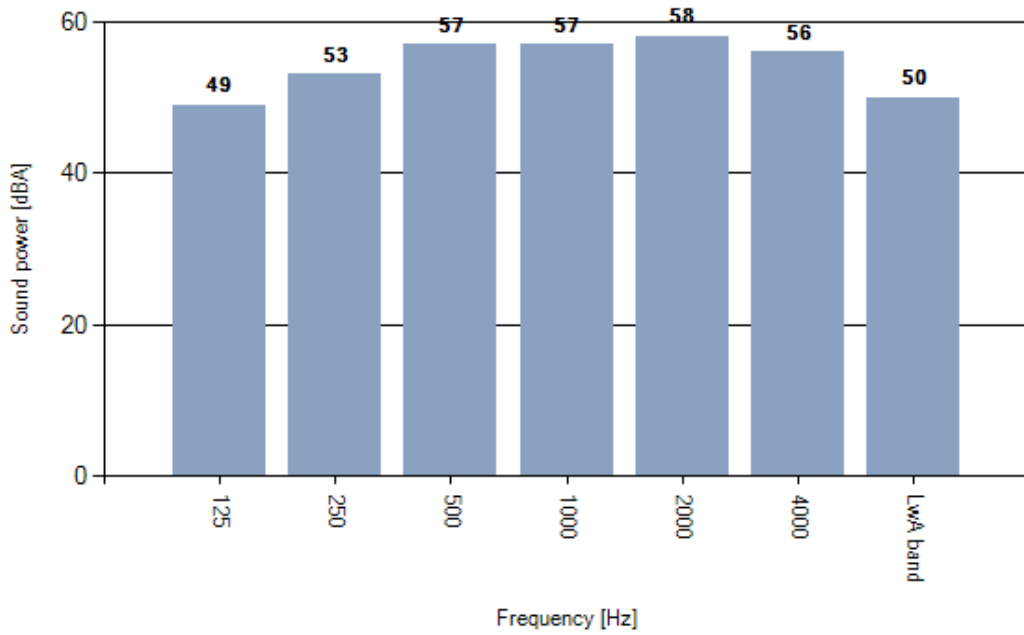


### Static efficiency





Weighted octave sound power spectrum Outlet



Measured according to ISO 3744 and ISO 13347, installation type A. Measured in full bell mouth without guard grill. The value given may vary according to actual installation of the unit.

