

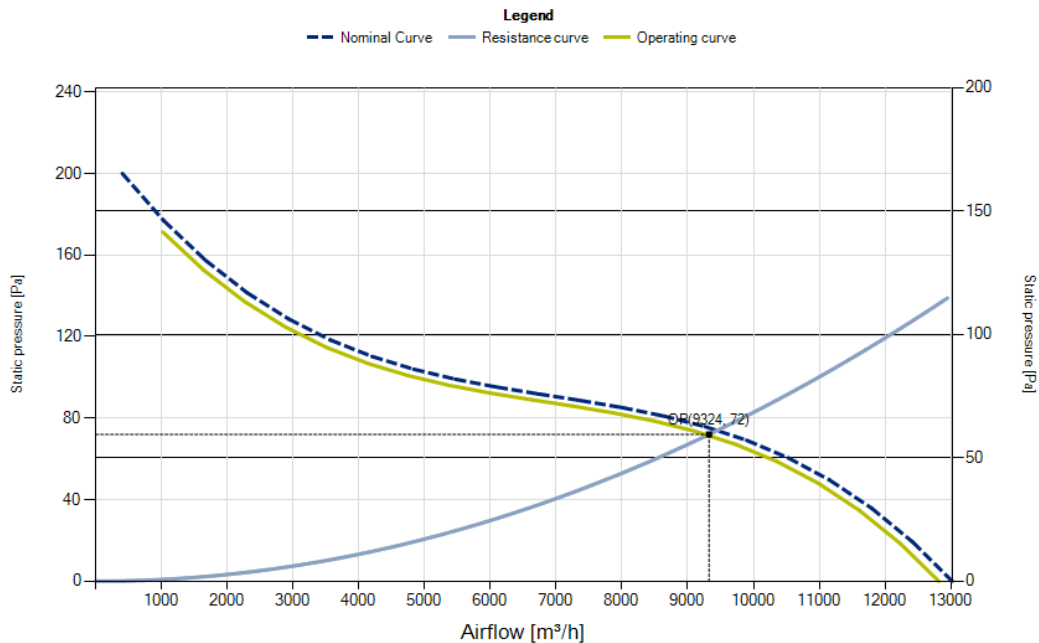
R14R-71APS-ES80B-05A02

EC Axial Fans with

Ordering code: 0314-4-0059

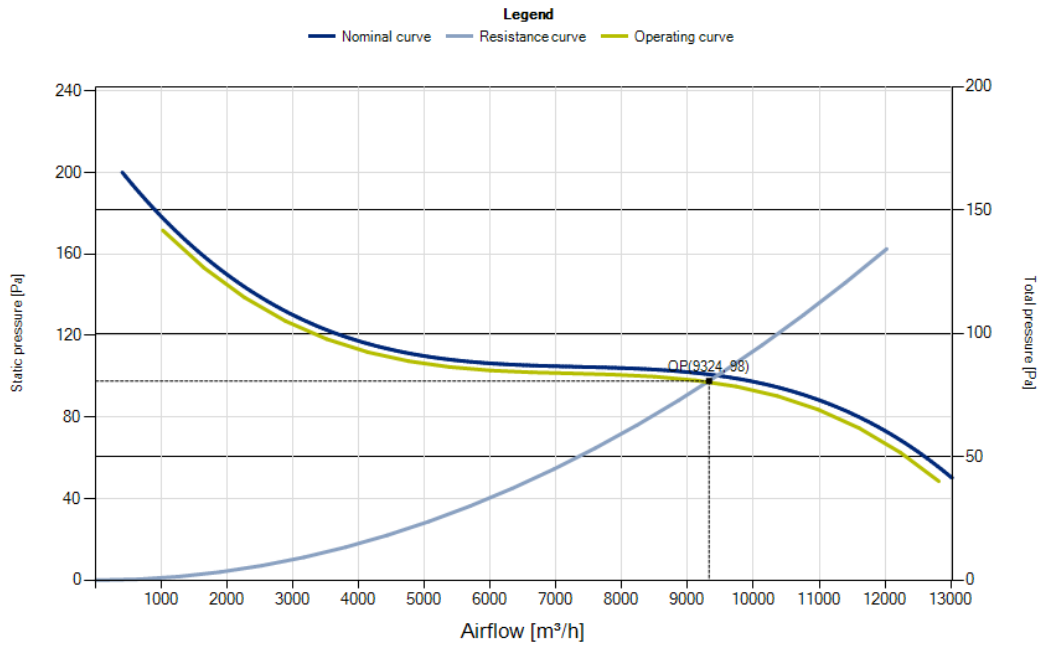
| Operating Point | | Nominal data | | Erp Data | |
|-------------------------------------|------|-------------------------|-----------|------------------------|------------|
| Air flow [m3/h] | 9324 | Phase [~] | 1 | Overall efficiency [%] | 51.0 |
| Static pressure [Pa] | 72 | Voltage [V] | 230 / 230 | Measurement cat. | A |
| Density [kg/m3] | 1.2 | Voltage range [V] | 200-277 | Efficiency category | static |
| Total pressure [Pa] | 97 | Frequency [Hz] | 50 / 60 | Efficiency grade N | 59.8 |
| Rotation speed [1/min] | 688 | Input power [W] | 400 / 400 | Variable speed drive | INTEGRATED |
| Input power [W] | 410 | Input current [A] | 1.7 / 1.7 | Power input [kW] | 0.42 |
| Current [A] | 1.72 | Nominal speed [rpm] | 700 / 700 | Airflow [m3/h] | 9324 |
| Total efficiency [%] | 61 | Min. ambient temp. [°C] | -25 | Pressure drop [Pa] | 77 |
| Static efficiency [%] | 45 | Max. ambient temp. [°C] | 60 | Rotational Speed [rpm] | 717 |
| Sound power Outlet [dB] | 76 | Protection class | IP54 | Specific ratio | 1.00 |
| Weighted sound power Outlet [dB(A)] | 69 | Insulation class | 130 | | |
| Sound power inlet [dB] | 0 | Capacitor [µF/450V] | 0.00 | | |
| Weighted sound power inlet [dB(A)] | 0 | K. Value | 0 | | |
| Sound pressure [dB] | 58 | Connection | 0 / 0 | | |
| Weighted sound pressure [dB(A)] | 56 | Weight [Kg] | 16.4 | | |

Static pressure



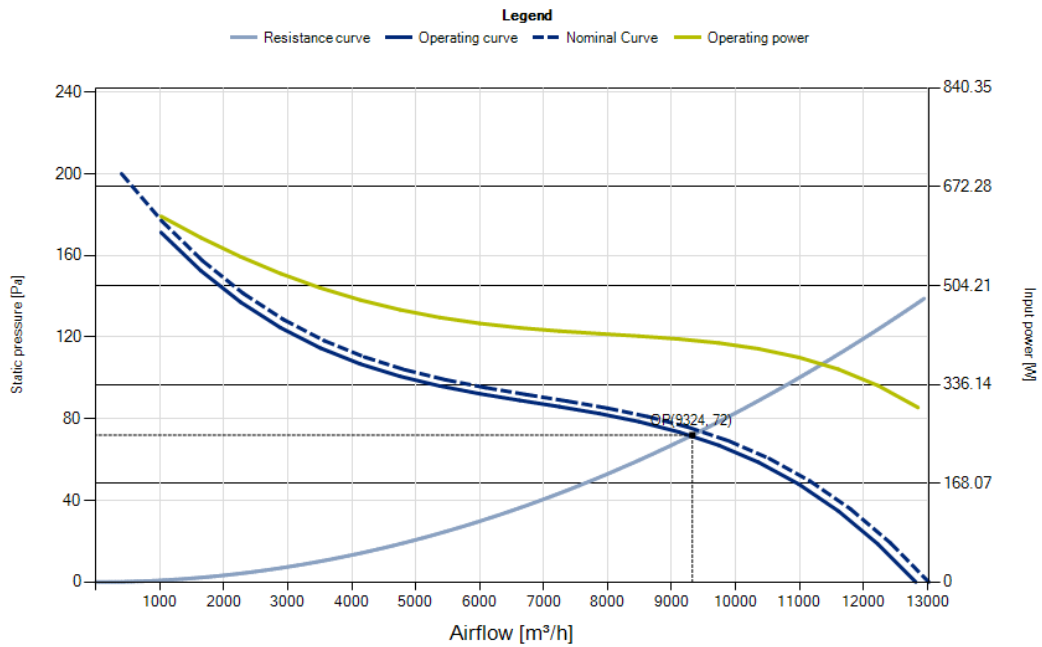
Measured according to ISO 5801, installation type A. Measured in full bell mouth without guard grill.

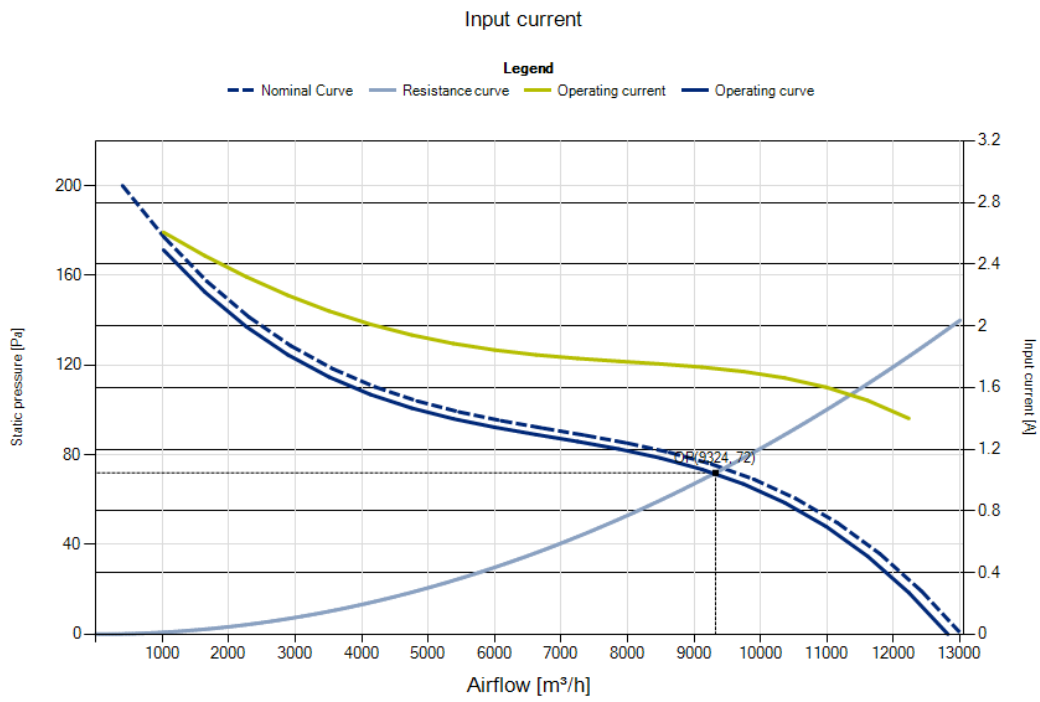
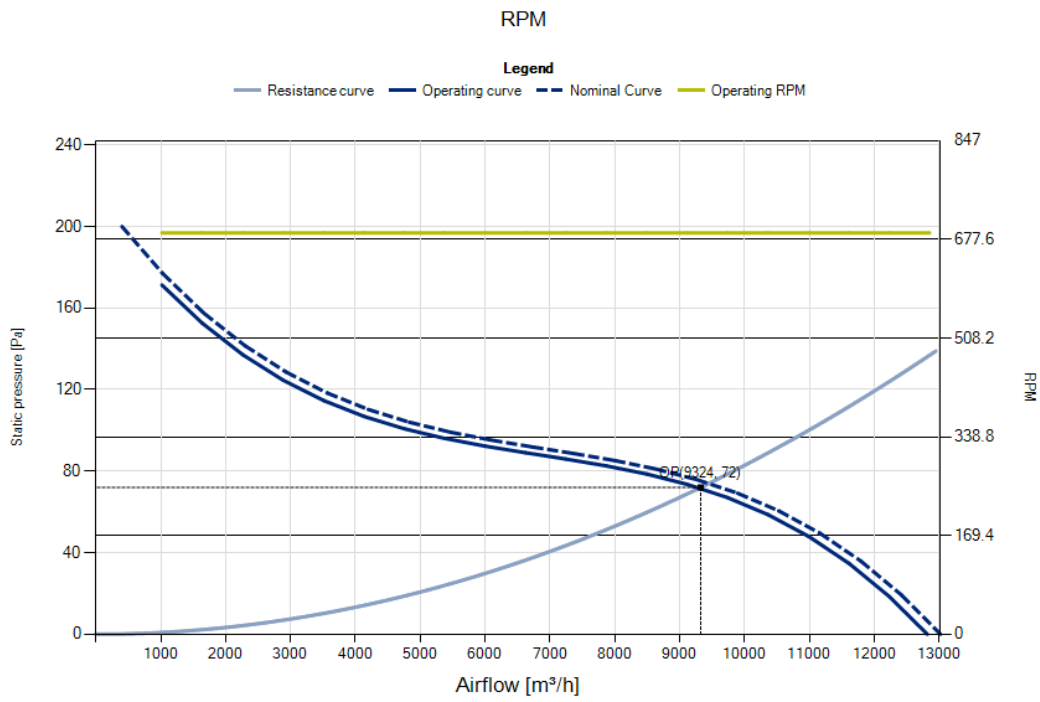
Total pressure



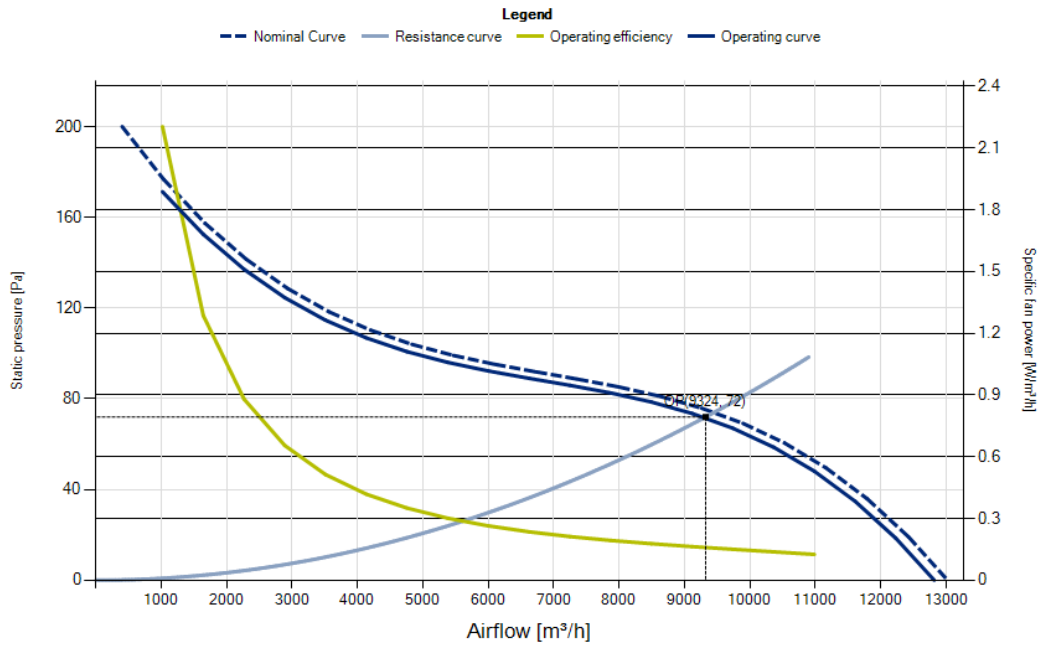
Measured according to ISO 5801, installation type A. Measured in full bell mouth without guard grill.

Input power

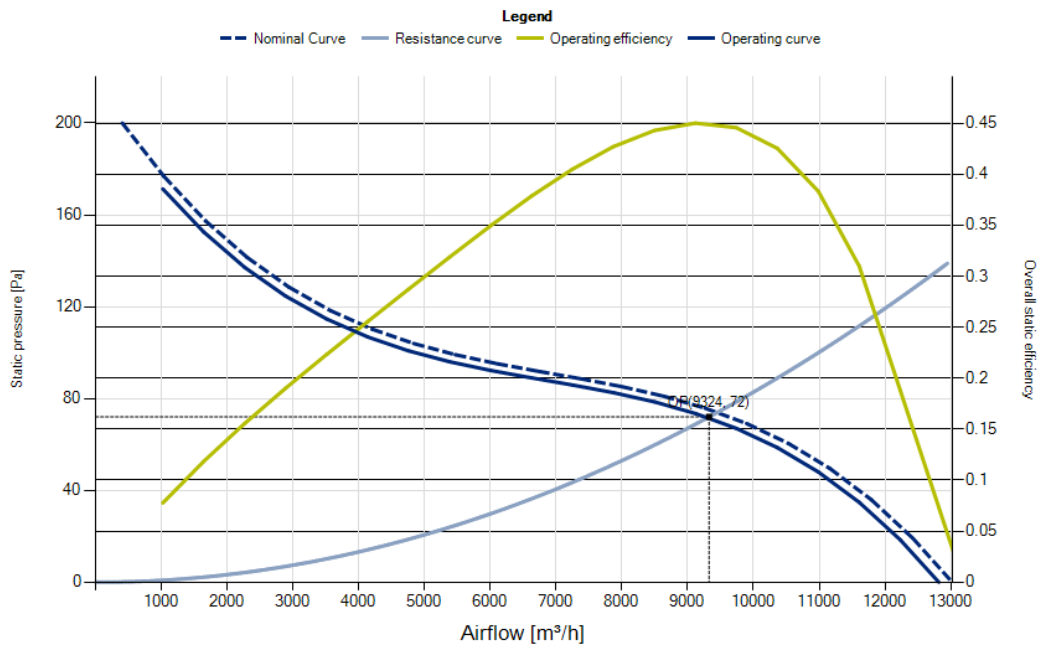




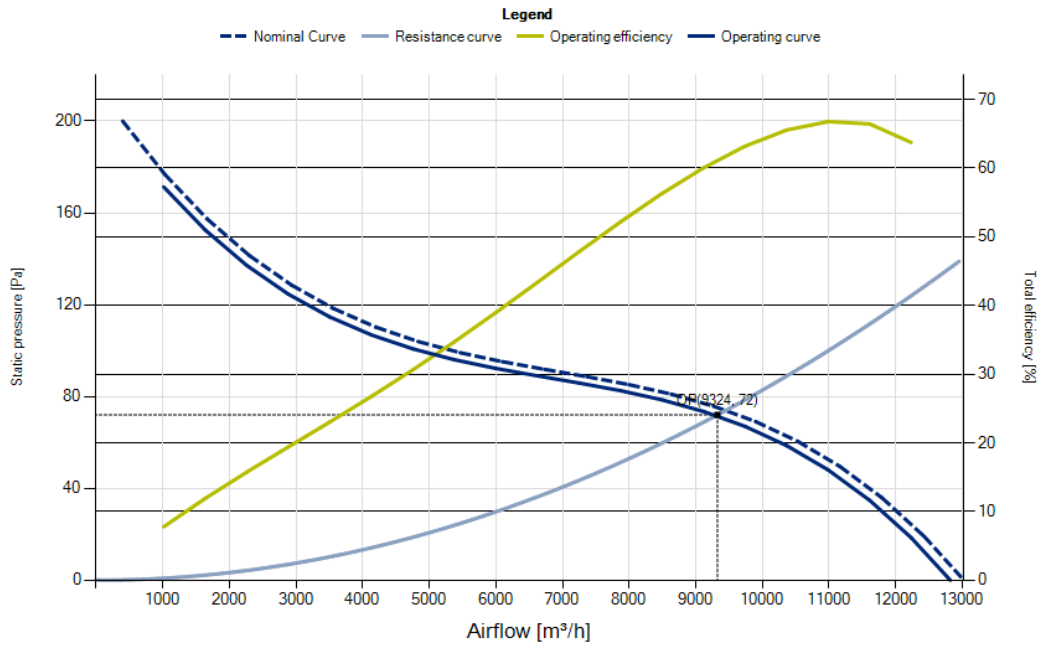
Specific fan power



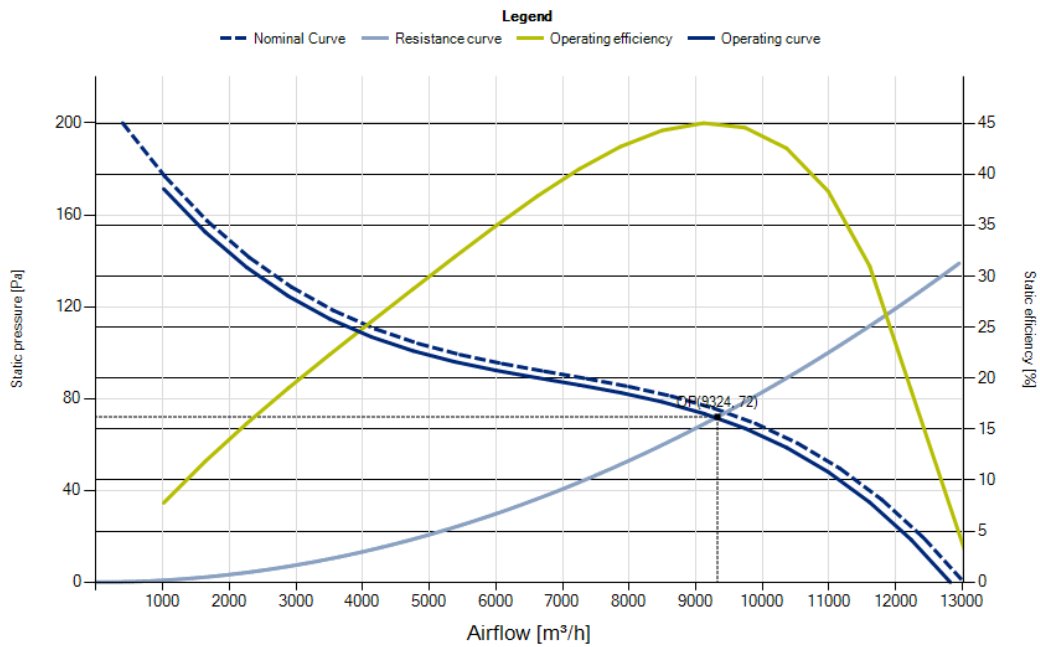
Overall static efficiency



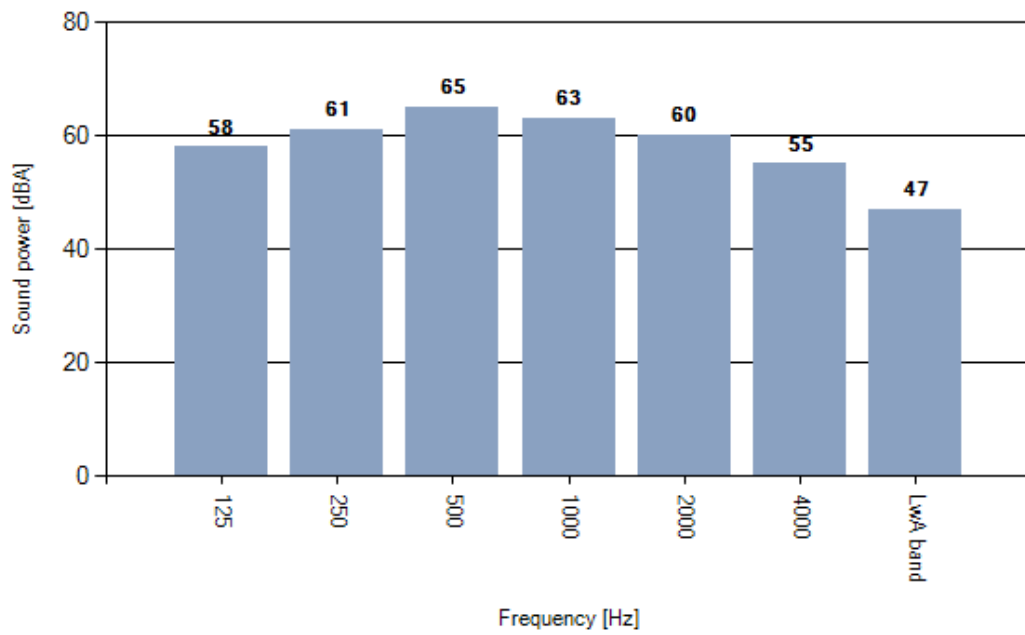
Total efficiency



Static efficiency



Weighted octave sound power spectrum Outlet



Measured according to ISO 3744 and ISO 13347, installation type A. Measured in full bell mouth without guard grill. The value given may vary according to actual installation of the unit.