



SPECIFICATIONS OF COMPRESSOR

Model No: C-SBS180H38C

Output : 5HP



DALIAN SANYO COMPRESSOR Co.,Ltd.
SANYO Electric Co.,Ltd.

31-May-11

GENERAL SPECIFICATIONS

Model No:	C-SBS180H38C	
Application		
Evaporating Temp Range	(°C)	-15.0 ~ 12.0
Refrigerant	R407C	
Compressor Cooling	Natural Cooling	
Rated Performance		
Capacity	(W)	14700
Input	(W)	4770
Current	(A)	8.2
Revolution	(min ⁻¹)	2900
Sound Level	(dB(A))	60(MAX)
Rating Conditions		
Power Source	3-PH 380V 50Hz	
Evaporating Temp	(°C)	7.2
Condensing Temp	(°C)	54.4
Suction Gas Temp	(°C)	18.3
Liquid Temp	(°C)	43.8
Ambient Temp	(°C)	35.0
Measuring Point of Sound Level		
Distance from the Compressor	(m)	1.0
Compressor		
Design	Hermetic Scroll	
Displacement	(cm ³)	83.7
Suction Line Connection	(Φ mm OD)	22.22
Discharge Line Connection	(Φ mm OD)	12.7
Oil	(ml)	1700 (FV68S)
Mass(Incl.Oil)	(kg)	40
Motor		
Type	3-PH Induction Motor(3IR)	
Pole	2	
Rated Power Source	3-PH 50Hz 380V	
Voltage Range	(V)	342~418
Starting Current	(A)	53

DALIAN SANYO COMPRESSOR Co.,Ltd.
SANYO Electric Co.,Ltd.

PERFORMANCE DATA

Compressor Model	C-SBS180H38C
Power Source	3PH 50Hz 380V
Suction Gas Superheat(K)	11.1
Sub Cooling(K)	8.3
Compressor Cooling	Natural Cooling
Refrigerant	R407C

CAPACITY(W)

Condensing Temperature(°C)	Evaporating Temperature(°C)							
	-15	-10	-6.7	0	4.4	7.2	10	12
35.0	7,850	9,650	11,050	14,560	17,440	19,570	21,960	23,840
40.5	7,230	8,890	10,180	13,420	16,090	18,060	20,270	22,010
45.0	6,760	8,310	9,520	12,560	15,060	16,900	18,970	20,610
50.0	6,260	7,700	8,830	11,650	13,980	15,690	17,620	19,140
54.4		7,210	8,260	10,910	13,090	14,700	16,510	17,940
60.0			7,600	10,030	12,040	13,530	15,200	16,510
65.0				9,320	11,190	12,570	14,130	15,350

POWER(W)

Condensing Temperature(°C)	Evaporating Temperature(°C)							
	-15	-10	-6.7	0	4.4	7.2	10	12
35.0	2,920	2,980	3,010	3,080	3,110	3,130	3,140	3,160
40.5	3,330	3,380	3,410	3,470	3,500	3,510	3,530	3,540
45.0	3,740	3,770	3,800	3,840	3,860	3,870	3,890	3,900
50.0	4,260	4,270	4,280	4,300	4,320	4,330	4,340	4,340
54.4		4,760	4,760	4,760	4,770	4,770	4,780	4,780
60.0			5,440	5,410	5,400	5,390	5,400	5,400
65.0				6,050	6,020	6,010	6,000	6,000

CURRENT(A)

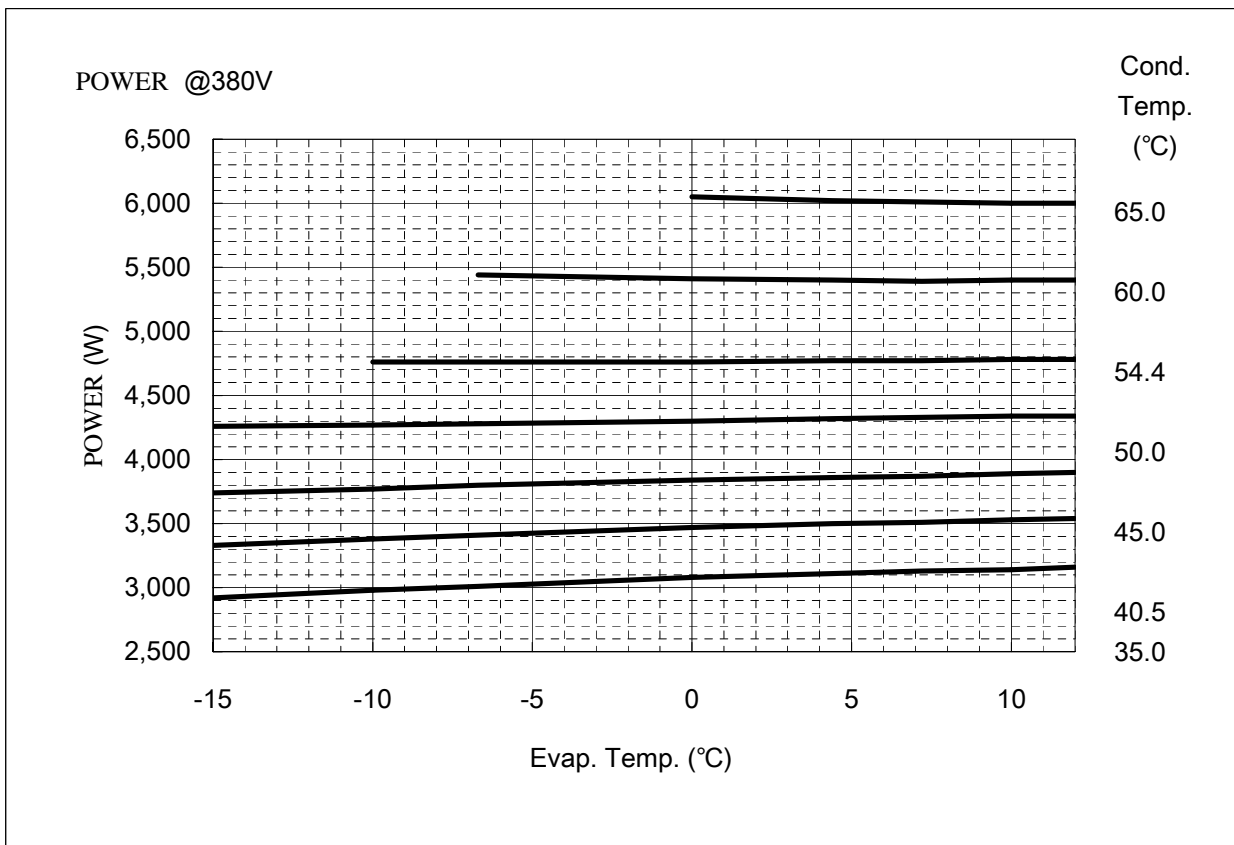
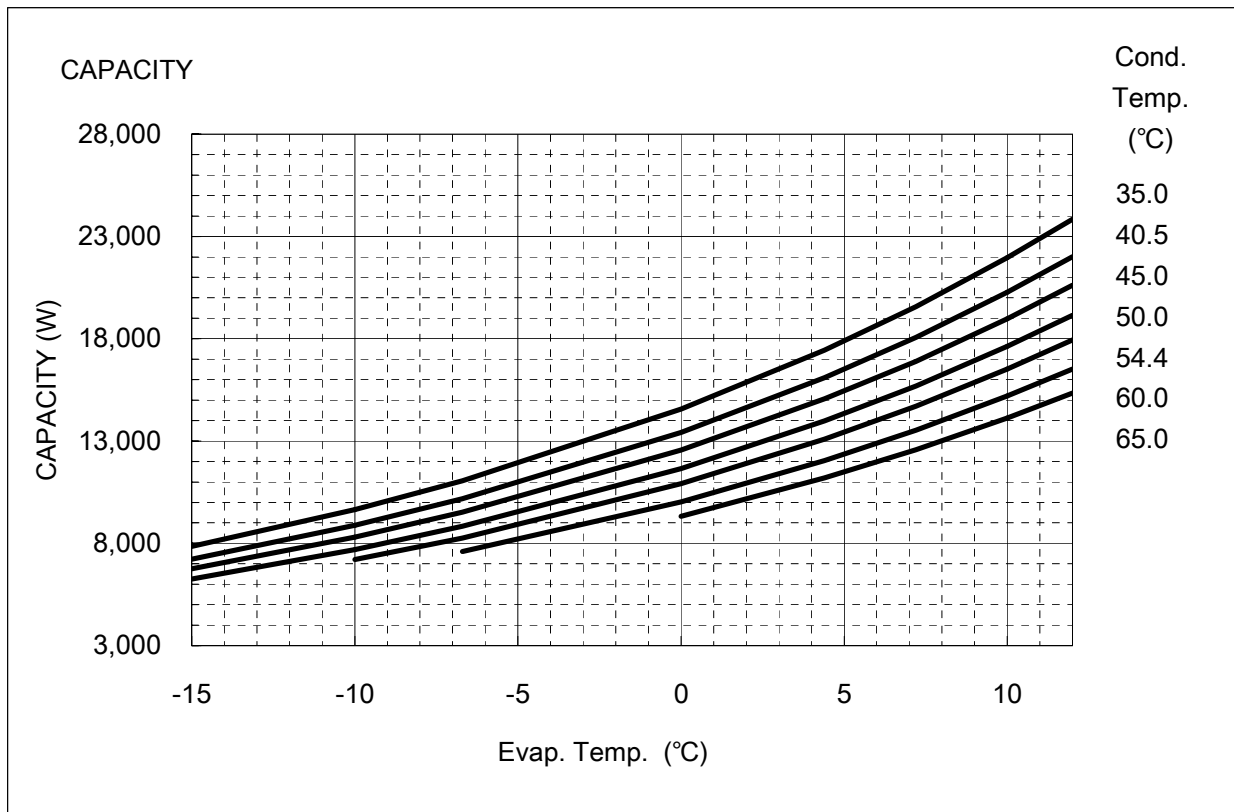
Condensing Temperature(°C)	Evaporating Temperature(°C)							
	-15	-10	-6.7	0	4.4	7.2	10	12
35.0	5.4	5.5	5.6	5.7	5.7	5.7	5.8	5.8
40.5	6.0	6.1	6.2	6.3	6.3	6.3	6.3	6.4
45.0	6.7	6.7	6.8	6.8	6.9	6.9	6.9	6.9
50.0	7.4	7.5	7.5	7.5	7.5	7.6	7.6	7.6
54.4		8.2	8.2	8.2	8.2	8.2	8.2	8.2
60.0			9.2	9.1	9.1	9.1	9.1	9.1
65.0				10.0	10.0	10.0	10.0	9.9

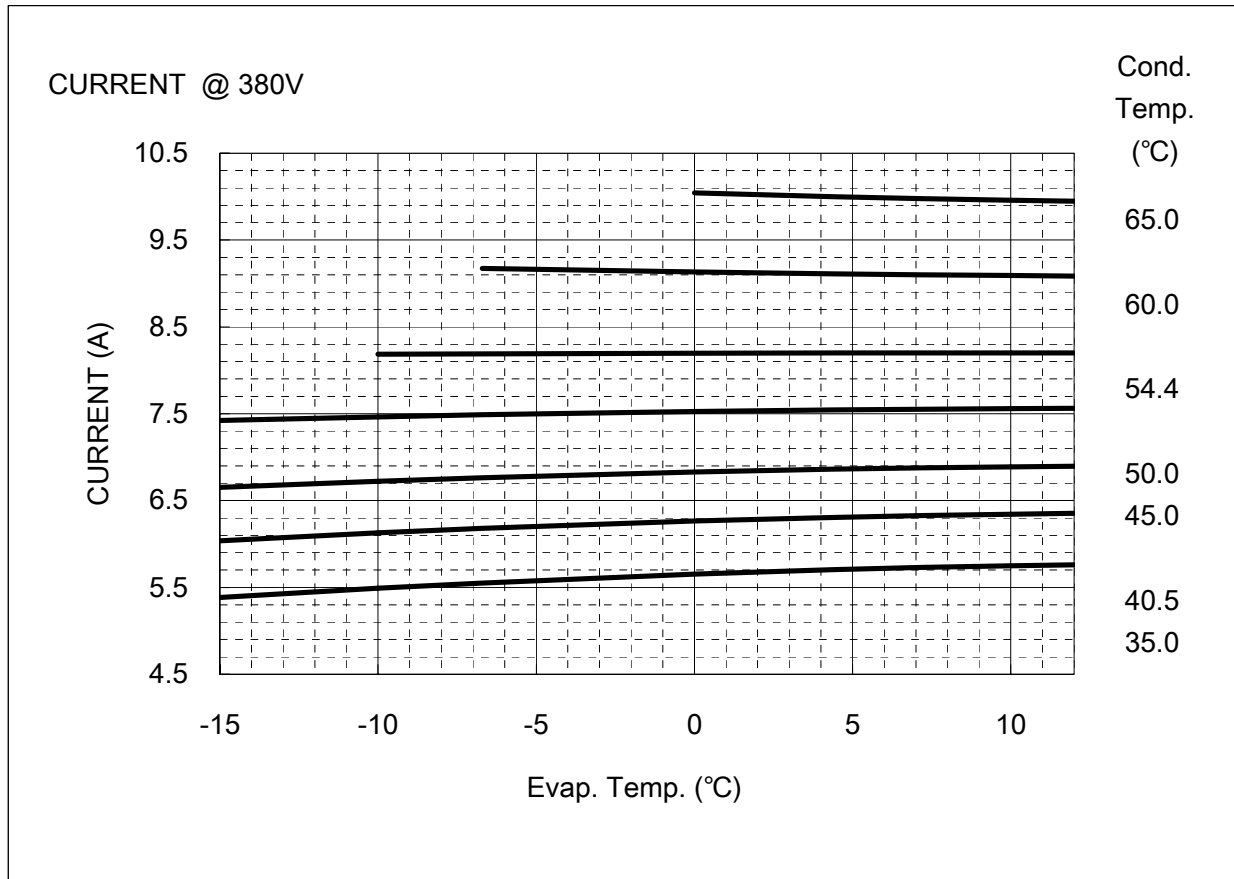
REFRIG FLOW(kg/h)

Condensing Temperature(°C)	Evaporating Temperature(°C)							
	-15	-10	-6.7	0	4.4	7.2	10	12
35.0	166	199	225	288	339	376	417	449
40.5	162	195	220	282	332	369	409	441
45.0	159	191	216	277	327	363	403	434
50.0	155	187	212	272	321	357	396	427
54.4		184	208	268	316	351	391	421
60.0			203	262	310	345	383	413
65.0				257	304	339	377	407

Compressor Model(Code)
Power Source

C-SBS180H38C
3PH 50Hz 380V





COEFFICIENTS OF PERFORMANCE CURVES

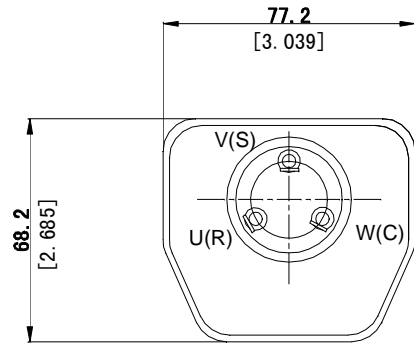
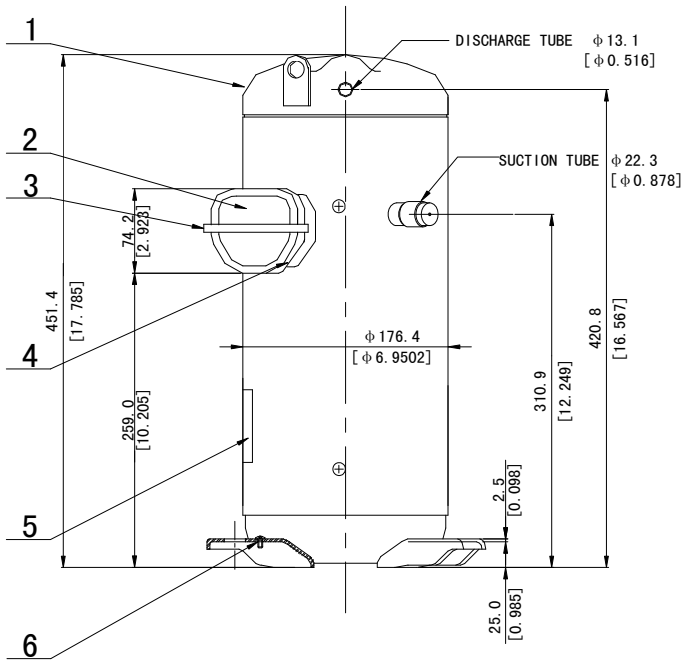
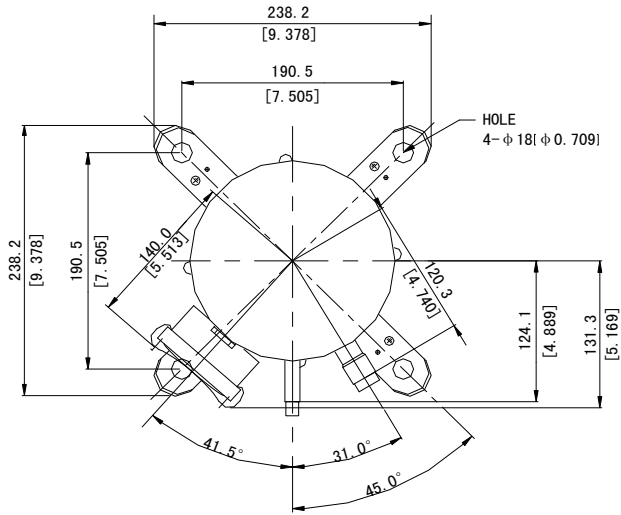
Compressor Model **C-SBS180H38C**
 Power Source **3PH 50Hz 380V**
 Suction Gas Superheat (K) **11.1**
 Sub Cooling (K) **8.3**
 Compressor Cooling **Natural Cooling**
 Refrigerant **R407C**

$X=C1+C2*(S)+C3*D+C4*(S^2)+C5*(S*D)+C6*(D^2)+C7*(S^3)+C8*(D*S^2)+C9*(S*D^2)+C10*(D^3)$
 X—CAPACITY(W) OR POWER(W) OR CURRENT(A) OR FLOW(kg/h)
 S—EVAPORATING TEMP, °C
 D—CONDENSING TEMP, °C

380V-50Hz	CAPACITY (W)	POWER (W)	CURRENT (A)	FLOW (kg/h)
1	2.361300E+04	2.273968E+03	3.856894E+00	3.287379E+02
2	9.808723E+02	-2.962137E+00	4.588549E-03	1.155629E+01
3	-3.045665E+02	-1.797323E+01	2.937165E-04	-1.231695E+00
4	1.784262E+01	-6.569552E-01	-9.641287E-04	2.088641E-01
5	-1.279989E+01	7.822919E-01	7.838210E-04	-2.609459E-02
6	1.303729E+00	1.170545E+00	1.460555E-03	1.981674E-03
7	1.445665E-01	-1.151696E-04	1.470459E-06	2.322954E-03
8	-1.520697E-01	1.377175E-02	1.706397E-05	-2.557434E-04
9	5.613022E-02	-1.307765E-02	-1.569411E-05	-8.407753E-06
10	-1.516197E-08	-5.454353E-09	-6.362209E-12	1.486900E-10

DIMENSIONAL SKETCH

C-SB Series

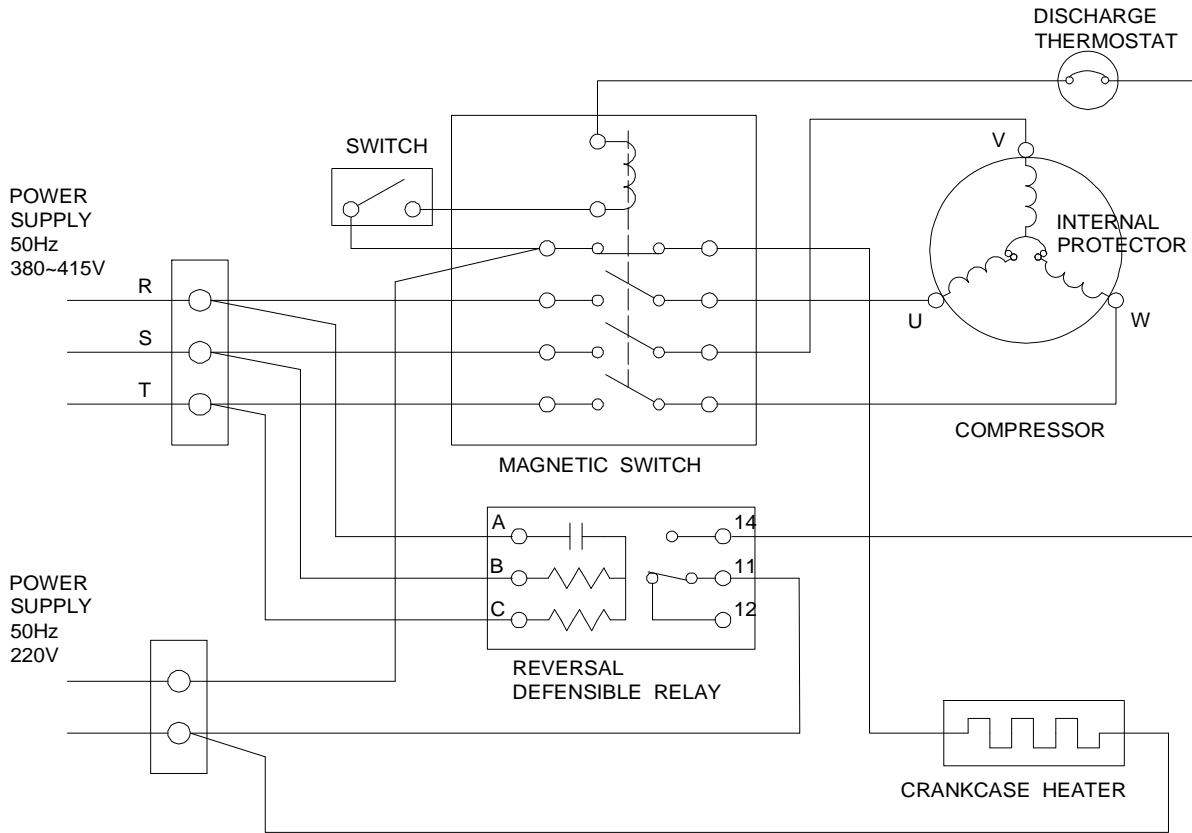


TERMINAL

No.	Qty	Name
1	1	Compressor
2	1	Terminal Box Cover
3	1	Terminal Box Clip
4	1	Insulating Grommet
5	1	Nameplate
6	1	Screw Special

WIRING & MOUNTING SKETCH

WIRING DIAGRAM C-SB Series 3phase B8



MOUNTING SKETCH

