



# Tecumseh

Verflüssigungssatz  
Spannungscode : FZ

## AE4430YHR-FZ

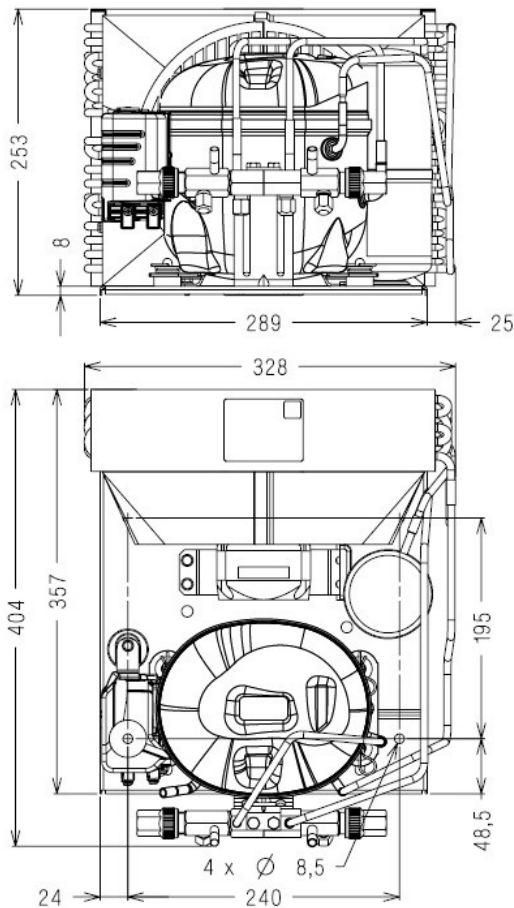
Gewerbliche Kühlung (Normalk.) (HP)

220 - 240V 1~ 50 Hz

R134a / R513A

## AE4430YHR-FZ

| Bedingungen     | Frequenz | Nennkälteleistung |       | Schalleistung<br>ISO3745 / ISO 3743-1 |
|-----------------|----------|-------------------|-------|---------------------------------------|
|                 |          | Watts             | BTU/h |                                       |
| EN13215 / R134a | 50 Hz    | 410               | 1397  | 59 dBA                                |
| EN13215 / R513A | 50 Hz    | 440               | 1500  | 59 dBA                                |



\* EN13215 : T°Umgebung 32.0°C / T°Verdampf.. -10.0°C / T°Sauggastemp.. 20.0°C  
T°Unter Kühlung. 3.0K

|                              |                  |
|------------------------------|------------------|
| <b>Nettogewicht (kg)</b>     | 15.2             |
| <b>Expansion</b>             | Expansionsventil |
| <b>Luftdurchsatz (m³/h)</b>  | 410              |
| <b>Datenblatt Verdichter</b> | 21BFS-FZ         |
| <b>Typ Schaltanlage</b>      | CSIR             |
| <b>Strom (Amp)</b>           |                  |
| Nennstrom                    | 2.3              |
| Maximalstrom                 | 3.3              |
| Anlaufstrom                  | 12.7             |
| <b>Lüfter</b>                |                  |
| Mechanische Leistung (W)     | 1300             |
| Durchmesser (mm)             | 5.0              |
| Schutz                       | 200              |
| Schutzart (IP)               | Impedanz         |
| <b>Verflüssiger</b>          | IP42             |
|                              | 205/1660         |
| <b>Flüssigkeitsbehälter</b>  |                  |
| Volumen (l)                  | 0.75             |
| MWP (bar)                    | 32.0             |
| <b>Ansaugung</b>             |                  |
| Komponente                   | Vanne de Socle   |
| Außendurchmesser             | 9.5 (3/8")       |
| Anschlusstyp                 | zum Löten        |
| <b>Flüssigkeitsablauf</b>    |                  |
| Komponente                   | Vanne de Socle   |
| Außendurchmesser             | 6.35 (1/4")      |
| Anschlusstyp                 | zum Löten        |
| <b>ID Kundenanschluss</b>    | VR               |
| <b>Gitter</b>                | maille < à 8mm   |

NB: Tecumseh behält sich das Recht vor, die in diesem Dokument enthaltenen Informationen ohne vorherige Ankündigung zu verändern



**Tecumseh**

|                     |   |
|---------------------|---|
| <b>AE4430YHR-FZ</b> | <b>Tension FZ : 220 - 240V 1~ 50 Hz</b> |
|---------------------|---|

|  |                        |         |
|--|------------------------|---------|
| Les performances sont données dans les <b>conditions EN13215</b> : | Gaz aspirés :          | 20.0 °C |
| Condition Dew  | Sous refroidissement : | 3.0 K   |
| The performance data are in <b>EN13215 conditions</b> :            | Return gas :           | 20.0 °C |
| Dew Condition  | Subcooling :           | 3.0 K   |

© 2023 Tecumseh Products Company  
All rights reserved

**50 Hz R134a**

**N°513FS-FZ**

| 5   T ambience | 6   T évaporation  | (°C)   | -25  | -20  | -15  | -10  | -5   | 0    | 5    | 10   | 15   |
|----------------|--------------------|--------|------|------|------|------|------|------|------|------|------|
| <b>25</b>      | 1   P frigorifique | (Watt) | 209  | 276  | 355  | 448  | 553  | 669  | 796  | 931  | 1072 |
|                | 2   P absorbée     | (W)    | 198  | 215  | 233  | 252  | 273  | 296  | 321  | 349  | 381  |
|                | 3   I absorbée     | (A)    | 1.91 | 1.93 | 1.96 | 2.00 | 2.05 | 2.11 | 2.19 | 2.27 | 2.38 |
|                | 4   Tc             | (°C)   | 30.9 | 32.3 | 34.0 | 36.1 | 38.4 | 41.0 | 43.8 | 47.0 | 50.5 |
| <b>32</b>      | 1   P frigorifique | (Watt) |      | 250  | 324  | 410  | 506  | 612  | 727  | 849  | 976  |
|                | 2   P absorbée     | (W)    |      | 221  | 241  | 263  | 286  | 312  | 340  | 372  | 408  |
|                | 3   I absorbée     | (A)    |      | 1.93 | 1.98 | 2.03 | 2.09 | 2.16 | 2.24 | 2.34 | 2.46 |
|                | 4   Tc             | (°C)   |      | 38.8 | 40.5 | 42.4 | 44.6 | 47.1 | 49.8 | 52.9 | 56.3 |
| <b>43</b>      | 1   P frigorifique | (Watt) |      |      | 276  | 349  | 431  | 521  | 617  | 719  |      |
|                | 2   P absorbée     | (W)    |      |      | 251  | 276  | 304  | 335  | 369  | 406  |      |
|                | 3   I absorbée     | (A)    |      |      | 1.99 | 2.06 | 2.14 | 2.23 | 2.33 | 2.44 |      |
|                | 4   Tc             | (°C)   |      |      | 50.5 | 52.3 | 54.3 | 56.7 | 59.3 | 62.2 |      |

**50 Hz R513A**

**N°7113**

| 5   T ambience | 6   T évaporation  | (°C)   | -25  | -20  | -15  | -10  | -5   | 0    | 5    | 10   | 15   |
|----------------|--------------------|--------|------|------|------|------|------|------|------|------|------|
| <b>25</b>      | 1   P frigorifique | (Watt) | 240  | 311  | 393  | 485  | 588  | 700  | 820  | 945  | 1073 |
|                | 2   P absorbée     | (W)    | 217  | 233  | 250  | 268  | 287  | 310  | 336  | 367  | 402  |
|                | 3   I absorbée     | (A)    | 2.10 | 2.10 | 2.11 | 2.13 | 2.16 | 2.22 | 2.29 | 2.39 | 2.51 |
|                | 4   Tc             | (°C)   | 30.9 | 32.3 | 34.0 | 36.1 | 38.4 | 41.0 | 43.8 | 47.0 | 50.5 |
| <b>32</b>      | 1   P frigorifique | (Watt) | 213  | 279  | 355  | 440  | 534  | 636  | 744  | 856  | 971  |
|                | 2   P absorbée     | (W)    | 220  | 238  | 257  | 278  | 300  | 326  | 355  | 389  | 428  |
|                | 3   I absorbée     | (A)    | 2.07 | 2.09 | 2.11 | 2.15 | 2.19 | 2.26 | 2.34 | 2.45 | 2.57 |
|                | 4   Tc             | (°C)   | 37.5 | 38.8 | 40.5 | 42.4 | 44.6 | 47.1 | 49.8 | 52.9 | 56.3 |
| <b>43</b>      | 1   P frigorifique | (Watt) |      | 231  | 295  | 367  | 446  | 531  | 621  | 713  |      |
|                | 2   P absorbée     | (W)    |      | 242  | 265  | 291  | 318  | 349  | 384  | 423  |      |
|                | 3   I absorbée     | (A)    |      | 2.05 | 2.11 | 2.17 | 2.24 | 2.32 | 2.42 | 2.54 |      |
|                | 4   Tc             | (°C)   |      | 49.1 | 50.5 | 52.3 | 54.3 | 56.7 | 59.3 | 62.2 |      |

1 = cooling capacity 2 = power input 3 = current 4 = condensing temperature 5 = ambient temperature 6 = evaporating temperature

Nota : Tecumseh se réserve le droit de modifier les informations contenues dans ce document sans préavis.

Note : Tecumseh reserves the right to change information contained in this document without notification.