



# Tecumseh

Kompressor  
Spannungscode : XG

## FH2511Z-XG

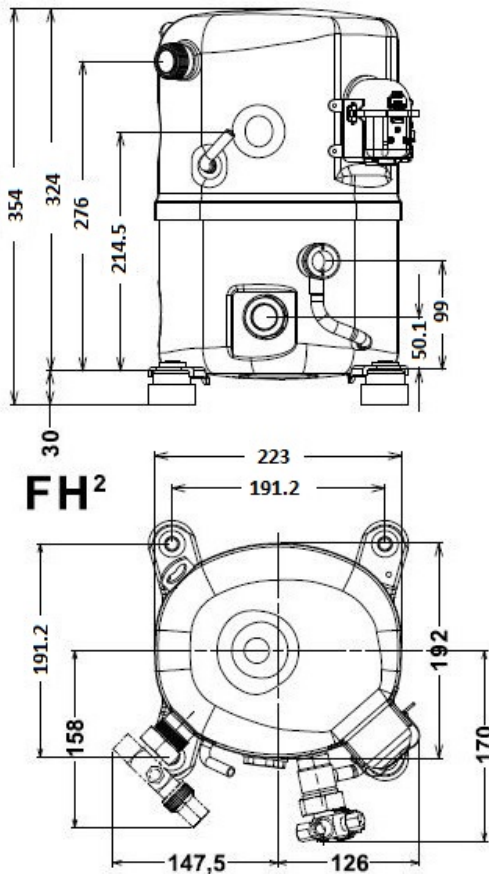
Gewerbliche Kühlung (Tiefk.) (BP)

380-420V 3~ 50Hz / 460V 3~ 60 Hz

R452A / R404A / R448A / R449A

FH2511Z-XG1A

| Bedingungen     | Frequenz      | Nennkälteleistung |             | Schalleistung<br>ISO3745 / ISO 3743-1 |
|-----------------|---------------|-------------------|-------------|---------------------------------------|
|                 |               | Watts             | BTU/h       |                                       |
| EN12900 / R452A | 50 Hz / 60 Hz | 1495 / 1652       | 5097 / 5634 | 74 dBA                                |
| EN12900 / R404A | 50 Hz / 60 Hz | 1671 / 1846       | 5696 / 6296 | 74 dBA                                |
| EN12900 / R448A | 50 Hz / 60 Hz | 1309 / 1447       | 4463 / 4933 | 74 dBA                                |
| EN12900 / R449A | 50 Hz / 60 Hz | 1309 / 1447       | 4463 / 4933 | 74 dBA                                |



|                               |                            |
|-------------------------------|----------------------------|
| Hubvolumen (cm <sup>3</sup> ) | 68                         |
| Nettogewicht (kg)             | 31.0                       |
| Ölmenge (cm <sup>3</sup> )    | 1140.0                     |
| Ölsorte                       | P.O.E                      |
| Expansion                     | Kapillare/Expansionsventil |
| Kühlung                       | Belüftet                   |
| Hilfsphase (Ohm)              | 3.8                        |
| <b>Strom</b>                  |                            |
| Nennstrom (A)                 | 4.2   4                    |
| Maximalstrom (A)              | 8.3                        |
| Anlaufstrom (A)               | 60                         |
| <b>Typ Schaltanlage</b>       | TRI                        |
| <b>Schutz</b>                 | Interne                    |
| <b>Außendurchmesser</b>       |                            |
| Ø Saugleitung                 | 15.9 (5/8")                |
| Ø Druckleitung                | 12.7 (1/2")                |
| Ø Prozessleitung              | 6.35 (1/4")                |

\* EN12900 : T°Verf. 40.0°C / T°Verdampf.. -35.0°C / T°Sauggastemp.. 20.0°C  
T°Unterkühlung. 0.0K

Zulassungen :



NB: Tecumseh behält sich das Recht vor, die in diesem Dokument enthaltenen Informationen ohne vorherige Ankündigung zu verändern



**Tecumseh**

|                   |  |
|-------------------|--|
| <b>FH2511Z-XG</b> | <b>Tension XG : 380-420V 3~ 50Hz / 460V 3~ 60 Hz</b> |
|-------------------|--|

Les performances sont données dans les **conditions EN12900** :  
 Condition Dew  
 The performance data are in **EN12900 conditions** :  
 Dew Condition

Gaz aspirés : 20.0 °C  
 Sous refroidissement : 0.0 K  
 Return gas : 20.0 °C  
 Subcooling : 0.0 K

© 2023 Tecumseh Products Company  
All rights reserved

**50 Hz R452A**

**N°User-218**

| 4   T condensation | 5   T évaporation  | (°C)   | -40  | -35  | -30  | -25  | -20  | -15  | -10  |
|--------------------|--------------------|--------|------|------|------|------|------|------|------|
| <b>30</b>          | 1   P frigorifique | (Watt) | 1360 | 2022 | 2843 | 3843 | 5041 | 6456 | 8109 |
|                    | 2   P absorbée     | (W)    | 1125 | 1388 | 1650 | 1905 | 2149 | 2376 | 2581 |
|                    | 3   I absorbée     | (A)    | 2.97 | 3.13 | 3.31 | 3.51 | 3.73 | 3.96 | 4.21 |
| <b>40</b>          | 1   P frigorifique | (Watt) | 906  | 1495 | 2220 | 3102 | 4161 | 5414 | 6883 |
|                    | 2   P absorbée     | (W)    | 1031 | 1339 | 1655 | 1973 | 2286 | 2591 | 2882 |
|                    | 3   I absorbée     | (A)    | 2.85 | 3.09 | 3.34 | 3.61 | 3.89 | 4.19 | 4.50 |
| <b>50</b>          | 1   P frigorifique | (Watt) |      | 971  | 1591 | 2344 | 3252 | 4333 | 5607 |
|                    | 2   P absorbée     | (W)    |      | 1216 | 1587 | 1967 | 2352 | 2736 | 3114 |
|                    | 3   I absorbée     | (A)    |      | 2.93 | 3.26 | 3.60 | 3.96 | 4.33 | 4.71 |
| <b>60</b>          | 1   P frigorifique | (Watt) |      |      |      | 1589 | 2336 | 3234 | 4302 |
|                    | 2   P absorbée     | (W)    |      |      |      | 1881 | 2338 | 2802 | 3268 |
|                    | 3   I absorbée     | (A)    |      |      |      | 3.48 | 3.92 | 4.36 | 4.82 |

**60 Hz R452A**

**N°User-218**

| 4   T condensation | 5   T évaporation  | (°C)   | -40  | -35  | -30  | -25  | -20  | -15  | -10  |
|--------------------|--------------------|--------|------|------|------|------|------|------|------|
| <b>30</b>          | 1   P frigorifique | (Watt) | 1503 | 2235 | 3142 | 4247 | 5571 | 7136 | 8963 |
|                    | 2   P absorbée     | (W)    | 1224 | 1510 | 1795 | 2073 | 2338 | 2585 | 2809 |
|                    | 3   I absorbée     | (A)    | 2.65 | 2.79 | 2.95 | 3.13 | 3.32 | 3.53 | 3.75 |
| <b>40</b>          | 1   P frigorifique | (Watt) | 1002 | 1652 | 2454 | 3429 | 4599 | 5984 | 7608 |
|                    | 2   P absorbée     | (W)    | 1121 | 1457 | 1801 | 2146 | 2488 | 2820 | 3136 |
|                    | 3   I absorbée     | (A)    | 2.54 | 2.75 | 2.98 | 3.21 | 3.47 | 3.73 | 4.01 |
| <b>50</b>          | 1   P frigorifique | (Watt) |      | 1074 | 1758 | 2591 | 3594 | 4789 | 6198 |
|                    | 2   P absorbée     | (W)    |      | 1323 | 1727 | 2141 | 2560 | 2978 | 3389 |
|                    | 3   I absorbée     | (A)    |      | 2.61 | 2.90 | 3.21 | 3.53 | 3.86 | 4.20 |
| <b>60</b>          | 1   P frigorifique | (Watt) |      |      |      | 1757 | 2582 | 3574 | 4755 |
|                    | 2   P absorbée     | (W)    |      |      |      | 2046 | 2544 | 3049 | 3556 |
|                    | 3   I absorbée     | (A)    |      |      |      | 3.10 | 3.49 | 3.89 | 4.30 |

1 = cooling capacity 2 = power input 3 = current 4 = condensing temperature 5 = evaporating temperature

**Nota : Tecumseh se réserve le droit de modifier les informations contenues dans ce document sans préavis.**

**Note : Tecumseh reserves the right to change information contained in this document without notification.**



**Tecumseh**

|                   |  |
|-------------------|--|
| <b>FH2511Z-XG</b> | <b>Tension XG : 380-420V 3~ 50Hz / 460V 3~ 60 Hz</b> |
|-------------------|--|

|  |                        |         |
|--|------------------------|---------|
| Les performances sont données dans les <b>conditions EN12900</b> : | Gaz aspirés :          | 20.0 °C |
| Condition Dew  | Sous refroidissement : | 0.0 K   |
| The performance data are in <b>EN12900 conditions</b> :            | Return gas :           | 20.0 °C |
| Dew Condition  | Subcooling :           | 0.0 K   |

© 2023 Tecumseh Products Company  
All rights reserved

### 50 Hz R404A

N°User-217

| 4   T condensation | 5   T évaporation  | (°C)   | -40  | -35  | -30  | -25  | -20  | -15  | -10  |
|--------------------|--------------------|--------|------|------|------|------|------|------|------|
| <b>30</b>          | 1   P frigorifique | (Watt) | 1533 | 2217 | 3060 | 4078 | 5291 | 6717 | 8373 |
|                    | 2   P absorbée     | (W)    | 1231 | 1505 | 1775 | 2037 | 2284 | 2512 | 2714 |
|                    | 3   I absorbée     | (A)    | 3.25 | 3.40 | 3.57 | 3.75 | 3.96 | 4.18 | 4.42 |
| <b>40</b>          | 1   P frigorifique | (Watt) | 1065 | 1671 | 2410 | 3301 | 4363 | 5612 | 7068 |
|                    | 2   P absorbée     | (W)    | 1154 | 1475 | 1801 | 2126 | 2444 | 2751 | 3041 |
|                    | 3   I absorbée     | (A)    | 3.19 | 3.40 | 3.63 | 3.88 | 4.16 | 4.44 | 4.75 |
| <b>50</b>          | 1   P frigorifique | (Watt) |      | 1132 | 1758 | 2512 | 3411 | 4475 | 5721 |
|                    | 2   P absorbée     | (W)    |      | 1376 | 1758 | 2147 | 2537 | 2924 | 3301 |
|                    | 3   I absorbée     | (A)    |      | 3.31 | 3.61 | 3.93 | 4.27 | 4.62 | 5.00 |
| <b>60</b>          | 1   P frigorifique | (Watt) |      |      | 1128 | 1733 | 2461 | 3328 | 4353 |
|                    | 2   P absorbée     | (W)    |      |      | 1642 | 2095 | 2558 | 3025 | 3490 |
|                    | 3   I absorbée     | (A)    |      |      | 3.50 | 3.88 | 4.29 | 4.71 | 5.15 |

### 60 Hz R404A

N°User-217

| 4   T condensation | 5   T évaporation  | (°C)   | -40  | -35  | -30  | -25  | -20  | -15  | -10  |
|--------------------|--------------------|--------|------|------|------|------|------|------|------|
| <b>30</b>          | 1   P frigorifique | (Watt) | 1695 | 2451 | 3382 | 4508 | 5848 | 7424 | 9255 |
|                    | 2   P absorbée     | (W)    | 1340 | 1638 | 1932 | 2216 | 2485 | 2733 | 2954 |
|                    | 3   I absorbée     | (A)    | 2.90 | 3.03 | 3.18 | 3.35 | 3.53 | 3.73 | 3.94 |
| <b>40</b>          | 1   P frigorifique | (Watt) | 1177 | 1846 | 2663 | 3649 | 4822 | 6203 | 7812 |
|                    | 2   P absorbée     | (W)    | 1255 | 1605 | 1959 | 2313 | 2660 | 2994 | 3309 |
|                    | 3   I absorbée     | (A)    | 2.84 | 3.03 | 3.24 | 3.46 | 3.70 | 3.96 | 4.23 |
| <b>50</b>          | 1   P frigorifique | (Watt) |      | 1252 | 1943 | 2776 | 3770 | 4946 | 6323 |
|                    | 2   P absorbée     | (W)    |      | 1498 | 1913 | 2336 | 2761 | 3182 | 3592 |
|                    | 3   I absorbée     | (A)    |      | 2.95 | 3.22 | 3.50 | 3.80 | 4.12 | 4.45 |
| <b>60</b>          | 1   P frigorifique | (Watt) |      |      | 1247 | 1916 | 2720 | 3678 | 4811 |
|                    | 2   P absorbée     | (W)    |      |      | 1787 | 2280 | 2783 | 3291 | 3798 |
|                    | 3   I absorbée     | (A)    |      |      | 3.12 | 3.46 | 3.82 | 4.20 | 4.59 |

1 = cooling capacity 2 = power input 3 = current 4 = condensing temperature 5 = evaporating temperature

**Nota : Tecumseh se réserve le droit de modifier les informations contenues dans ce document sans préavis.**

**Note : Tecumseh reserves the right to change information contained in this document without notification.**



**Tecumseh**

|                   |  |
|-------------------|--|
| <b>FH2511Z-XG</b> | <b>Tension XG : 380-420V 3~ 50Hz / 460V 3~ 60 Hz</b> |
|-------------------|--|

|  |                        |         |
|--|------------------------|---------|
| Les performances sont données dans les <b>conditions EN12900</b> : | Gaz aspirés :          | 20.0 °C |
| Condition Dew  | Sous refroidissement : | 0.0 K   |
| The performance data are in <b>EN12900 conditions</b> :            | Return gas :           | 20.0 °C |
| Dew Condition  | Subcooling :           | 0.0 K   |

| <b>50 Hz R448A (*)</b> |                    |        |            |            |            |            |            |            |
|------------------------|--------------------|--------|------------|------------|------------|------------|------------|------------|
| <b>N°User-220</b>      |                    |        |            |            |            |            |            |            |
| 4   T condensation     | 5   T évaporation  | (°C)   | <b>-35</b> | <b>-30</b> | <b>-25</b> | <b>-20</b> | <b>-15</b> | <b>-10</b> |
| <b>30</b>              | 1   P frigorifique | (Watt) | 1772       | 2540       | 3485       | 4630       | 5996       | 7605       |
|                        | 2   P absorbée     | (W)    | 1285       | 1537       | 1784       | 2021       | 2243       | 2442       |
|                        | 3   I absorbée     | (A)    | 2.90       | 3.09       | 3.29       | 3.50       | 3.73       | 3.98       |
| <b>40</b>              | 1   P frigorifique | (Watt) | 1309       | 1996       | 2843       | 3871       | 5102       | 6557       |
|                        | 2   P absorbée     | (W)    | 1232       | 1536       | 1844       | 2150       | 2448       | 2733       |
|                        | 3   I absorbée     | (A)    | 2.84       | 3.10       | 3.37       | 3.66       | 3.96       | 4.27       |
| <b>50</b>              | 1   P frigorifique | (Watt) | 843        | 1443       | 2184       | 3087       | 4175       | 5470       |
|                        | 2   P absorbée     | (W)    | 1108       | 1465       | 1834       | 2209       | 2586       | 2957       |
|                        | 3   I absorbée     | (A)    | 2.67       | 3.01       | 3.35       | 3.72       | 4.09       | 4.47       |
| <b>60</b>              | 1   P frigorifique | (Watt) |            |            | 1532       | 2304       | 3242       | 4369       |
|                        | 2   P absorbée     | (W)    |            |            | 1746       | 2193       | 2648       | 3107       |
|                        | 3   I absorbée     | (A)    |            |            | 3.23       | 3.67       | 4.12       | 4.59       |

| <b>60 Hz R448A (*)</b> |                    |        |            |            |            |            |            |            |
|------------------------|--------------------|--------|------------|------------|------------|------------|------------|------------|
| <b>N°User-220</b>      |                    |        |            |            |            |            |            |            |
| 4   T condensation     | 5   T évaporation  | (°C)   | <b>-35</b> | <b>-30</b> | <b>-25</b> | <b>-20</b> | <b>-15</b> | <b>-10</b> |
| <b>30</b>              | 1   P frigorifique | (Watt) | 1959       | 2807       | 3852       | 5117       | 6627       | 8406       |
|                        | 2   P absorbée     | (W)    | 1399       | 1673       | 1942       | 2200       | 2440       | 2658       |
|                        | 3   I absorbée     | (A)    | 2.59       | 2.75       | 2.93       | 3.12       | 3.33       | 3.55       |
| <b>40</b>              | 1   P frigorifique | (Watt) | 1447       | 2206       | 3142       | 4278       | 5639       | 7248       |
|                        | 2   P absorbée     | (W)    | 1341       | 1672       | 2006       | 2339       | 2664       | 2974       |
|                        | 3   I absorbée     | (A)    | 2.53       | 2.76       | 3.00       | 3.26       | 3.53       | 3.80       |
| <b>50</b>              | 1   P frigorifique | (Watt) | 932        | 1595       | 2413       | 3412       | 4615       | 6046       |
|                        | 2   P absorbée     | (W)    | 1206       | 1594       | 1995       | 2404       | 2814       | 3218       |
|                        | 3   I absorbée     | (A)    | 2.38       | 2.68       | 2.99       | 3.31       | 3.64       | 3.99       |
| <b>60</b>              | 1   P frigorifique | (Watt) |            |            | 1693       | 2546       | 3583       | 4828       |
|                        | 2   P absorbée     | (W)    |            |            | 1900       | 2386       | 2881       | 3380       |
|                        | 3   I absorbée     | (A)    |            |            | 2.88       | 3.27       | 3.68       | 4.09       |

**1 = cooling capacity 2 = power input 3 = current 4 = condensing temperature 5 = evaporating temperature**

(\*) Veuillez vous référer strictement aux Recommandations d'Utilisation et Bulletins Marketing Tecumseh du fait de la température de reflux élevée pour les applications LBP.  
 (\*) Due to very high discharge temperature especially on LBP conditions, please strictly refer to Tecumseh Guidelines & Marketing Bulletin when using this refrigerant.

**Nota : Tecumseh se réserve le droit de modifier les informations contenues dans ce document sans préavis.**

**Note : Tecumseh reserves the right to change information contained in this document without notification.**

© 2023 Tecumseh Products Company  
All rights reserved



**Tecumseh**

|                   |  |
|-------------------|--|
| <b>FH2511Z-XG</b> | <b>Tension XG : 380-420V 3~ 50Hz / 460V 3~ 60 Hz</b> |
|-------------------|--|

|  |                        |         |
|--|------------------------|---------|
| Les performances sont données dans les <b>conditions EN12900</b> : | Gaz aspirés :          | 20.0 °C |
| Condition Dew  | Sous refroidissement : | 0.0 K   |
| The performance data are in <b>EN12900 conditions</b> :            | Return gas :           | 20.0 °C |
| Dew Condition  | Subcooling :           | 0.0 K   |

| <b>50 Hz R449A (*)</b> |                    |        |            |            |            |            |            |            |
|------------------------|--------------------|--------|------------|------------|------------|------------|------------|------------|
| <b>N°User-219</b>      |                    |        |            |            |            |            |            |            |
| 4   T condensation     | 5   T évaporation  | (°C)   | <b>-35</b> | <b>-30</b> | <b>-25</b> | <b>-20</b> | <b>-15</b> | <b>-10</b> |
| <b>30</b>              | 1   P frigorifique | (Watt) | 1772       | 2540       | 3485       | 4630       | 5996       | 7605       |
|                        | 2   P absorbée     | (W)    | 1285       | 1537       | 1784       | 2021       | 2243       | 2442       |
|                        | 3   I absorbée     | (A)    | 2.90       | 3.09       | 3.29       | 3.50       | 3.73       | 3.98       |
| <b>40</b>              | 1   P frigorifique | (Watt) | 1309       | 1996       | 2843       | 3871       | 5102       | 6557       |
|                        | 2   P absorbée     | (W)    | 1232       | 1536       | 1844       | 2150       | 2448       | 2733       |
|                        | 3   I absorbée     | (A)    | 2.84       | 3.10       | 3.37       | 3.66       | 3.96       | 4.27       |
| <b>50</b>              | 1   P frigorifique | (Watt) | 843        | 1443       | 2184       | 3087       | 4175       | 5470       |
|                        | 2   P absorbée     | (W)    | 1108       | 1465       | 1834       | 2209       | 2586       | 2957       |
|                        | 3   I absorbée     | (A)    | 2.67       | 3.01       | 3.35       | 3.72       | 4.09       | 4.47       |
| <b>60</b>              | 1   P frigorifique | (Watt) |            |            | 1532       | 2304       | 3242       | 4369       |
|                        | 2   P absorbée     | (W)    |            |            | 1746       | 2193       | 2648       | 3107       |
|                        | 3   I absorbée     | (A)    |            |            | 3.23       | 3.67       | 4.12       | 4.59       |

| <b>60 Hz R449A (*)</b> |                    |        |            |            |            |            |            |            |
|------------------------|--------------------|--------|------------|------------|------------|------------|------------|------------|
| <b>N°User-219</b>      |                    |        |            |            |            |            |            |            |
| 4   T condensation     | 5   T évaporation  | (°C)   | <b>-35</b> | <b>-30</b> | <b>-25</b> | <b>-20</b> | <b>-15</b> | <b>-10</b> |
| <b>30</b>              | 1   P frigorifique | (Watt) | 1959       | 2807       | 3852       | 5117       | 6627       | 8406       |
|                        | 2   P absorbée     | (W)    | 1399       | 1673       | 1942       | 2200       | 2440       | 2658       |
|                        | 3   I absorbée     | (A)    | 2.59       | 2.75       | 2.93       | 3.12       | 3.33       | 3.55       |
| <b>40</b>              | 1   P frigorifique | (Watt) | 1447       | 2206       | 3142       | 4278       | 5639       | 7248       |
|                        | 2   P absorbée     | (W)    | 1341       | 1672       | 2006       | 2339       | 2664       | 2974       |
|                        | 3   I absorbée     | (A)    | 2.53       | 2.76       | 3.00       | 3.26       | 3.53       | 3.80       |
| <b>50</b>              | 1   P frigorifique | (Watt) | 932        | 1595       | 2413       | 3412       | 4615       | 6046       |
|                        | 2   P absorbée     | (W)    | 1206       | 1594       | 1995       | 2404       | 2814       | 3218       |
|                        | 3   I absorbée     | (A)    | 2.38       | 2.68       | 2.99       | 3.31       | 3.64       | 3.99       |
| <b>60</b>              | 1   P frigorifique | (Watt) |            |            | 1693       | 2546       | 3583       | 4828       |
|                        | 2   P absorbée     | (W)    |            |            | 1900       | 2386       | 2881       | 3380       |
|                        | 3   I absorbée     | (A)    |            |            | 2.88       | 3.27       | 3.68       | 4.09       |

1 = cooling capacity 2 = power input 3 = current 4 = condensing temperature 5 = evaporating temperature

(\*) Veuillez vous référer strictement aux Recommandations d'Utilisation et Bulletins Marketing Tecumseh du fait de la température de reflux élevée pour les applications LBP.  
 (\*) Due to very high discharge temperature especially on LBP conditions, please strictly refer to Tecumseh Guidelines & Marketing Bulletin when using this refrigerant.

**Nota : Tecumseh se réserve le droit de modifier les informations contenues dans ce document sans préavis.**

**Note : Tecumseh reserves the right to change information contained in this document without notification.**

© 2023 Tecumseh Products Company  
All rights reserved