



RECOVERY-RECYCLING



RECOVERY-RECYCLING UNIT



REGULATION UE-517/2014 -USAGE CONTROL

ARTICLE 13

3. From 1 January 2020, the use of fluorinated greenhouse gases, with a global warming potential of 2500 or more, to service or maintain refrigeration equipment with a charge size of 40 tonnes of CO₂ equivalent or more, shall be prohibited.

The prohibition referred to in the first subparagraph shall not apply to the following categories of fluorinated greenhouse gases until 1 January 2030:

b) recycled fluorinated greenhouse gases with a global warming potential of 2500 or more used for the maintenance or servicing of existing refrigeration equipment provided they have been recovered from such equipment. Such recycled gases may only be used by the undertaking which carried out their recovery as part of maintenance or servicing or the undertaking for which the recovery was carried out as part of maintenance or servicing.

EASYREC-1R

Recovery and recycling unit suitable for CFC, HCFC, HFC and HFO (included R32 and R1234ze)

- Compact design with integrated distiller.
- Distillation device with liquid refrigerant flow check, which allows to separate oil/impurities/dyes very efficiently.
- Self-evacuation system (PURGE) which allows to change the type of refrigerant easily.
- Automatic stop of the unit when there is no refrigerant available in the system.
- Signal LED (green/cycle performed successfully - red/alarm).
- Safety device for maximum pressure.
- Two cut-off valves to prevent refrigerant discharge.
- "Pulse free" gauges with regulation screw.
- Ceramic cylinder with carbon fiber seal.
- Sight glass and filter included.
- Wide graphics with quick functioning instructions.

Code	Model	Dimensions	Weight
13001020	EASYREC-1R	545 x 300 x 395 mm	18,9 kg



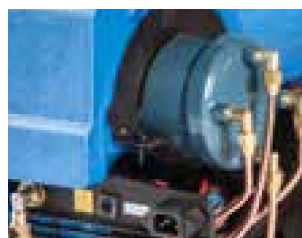
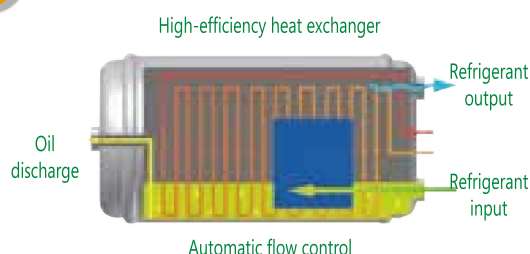
Specifications:

Refrigerant	CFC, HCFC, HFC and HFO (included R32 and R1234ze)
Power supply	220 - 240V AC 50 - 60 Hz
Motor power	550W
Maximal current draw	4A
Compressor	Piston-type and oil less
Automatic safety shut-off	38.5 bar/3850 kPa (558 psi)
Operating temperature	0 - 40 °C

Recovery rate	R12-R134a	R22-R407C	R404A-R410A-R507-R32
Vapour	14 kg/h	15 kg/h	16 kg/h
Liquid (recovery)	96 kg/h	108 kg/h	132 kg/h
Liquid (recovery-recycling)	16 kg/h	17 kg/h	18 kg/h
Push-pull	276 kg/h	336 kg/h	378 kg/h



Integrated distillation system



- HIGH heat exchange between "warm" refrigerant and "cold" refrigerant, that allows to optimize the distillation procedure
- Automatic flow control system
- Max filling up control
- Distillation device which allows to separate oil/impurities/dyes very efficiently

EASYREC-1

Recovery unit suitable for CFC, HCFC, HFC and HFO (included R32 and R1234ze)

- Self-evacuation system (PURGE) which allows to change the type of refrigerant easily.
- Automatic stop of the unit when there is no refrigerant available in the system.
- Signal LED (green/cycle performed successfully - red/alarm).
- Safety device for maximum pressure.
- Two cut-off valves to prevent refrigerant discharge.
- "Pulse free" gauges with regulation screw.
- Ceramic cylinder with carbon fiber seal.
- Sight glass and filter included.
- Wide graphics with quick functioning instructions.

Code	Model	Dimensions	Weight
13001019	EASYREC-1	545 x 300 x 395 mm	15,5 kg



Specifications:

Refrigerant	CFC, HCFC, HFC and HFO (included R32 and R1234ze)
Power supply	220 - 240V AC 50 - 60 Hz
Motor power	550W
Maximal current draw	4A
Compressor	Piston-type and oil less
Automatic safety shut-off	38.5 bar/3850 kPa (558 psi)
Operating temperature	0 - 40 °C

Recovery rate	R12-R134a	R22-R407C	R404A-R410A-R507-R32
Vapour	14 kg/h	15 kg/h	16 kg/h
Liquid (recovery)	96 kg/h	108 kg/h	132 kg/h
Push-pull	276 kg/h	336 kg/h	378 kg/h



Spare parts and accessories



Ref	Code	Model	Description	Dimensions	Weight
A	14015008	MG-111	Drier filter (1/4" SAE M-M)	100 x 40 x 40 mm	0,28 kg
A	14015041	MG-111-A	Allumina drier filter (1/4" SAE M-M)	100 x 40 x 40 mm	0,28 kg
B	14015013	XH412	"Hight capacity" drier filter (1/4" SAE M-M)	250 x 80 x 80 mm	1,10 kg
B	14015042	XH412-A	"Hight capacity" with allumina drier filter (1/4" SAE M-M)	250 x 80 x 80 mm	1,10 kg
	13008026	REC026	Sight glass	90 x 40 x 50 mm	0,17 kg
C	14020014001	G19020-WIG	Kit 10 gaskets for 1/4" SAE flexible hoses	160 x 90 x 10 mm	0,02 kg
D	06071013003	GYSS/4-4/6/Y	Connection hose for filter 1/4" SAE 150 mm	250 x 50 x 50 mm	0,16 kg

RECOVERY-RECYCLING UNIT



REGULATION UE-517/2014 -USAGE CONTROL

ARTICLE 13

3. From 1 January 2020, the use of fluorinated greenhouse gases, with a global warming potential of 2500 or more, to service or maintain refrigeration equipment with a charge size of 40 tonnes of CO₂ equivalent or more, shall be prohibited.

The prohibition referred to in the first subparagraph shall not apply to the following categories of fluorinated greenhouse gases until 1 January 2030:

b) recycled fluorinated greenhouse gases with a global warming potential of 2500 or more used for the maintenance or servicing of existing refrigeration equipment provided they have been recovered from such equipment. Such recycled gases may only be used by the undertaking which carried out their recovery as part of maintenance or servicing or the undertaking for which the recovery was carried out as part of maintenance or servicing.

EASYREC-2R

Recovery and recycling unit suitable for CFC, HCFC, HFC and HFO (included R32 and R1234ze)

- Compact design with integrated distiller.
- Distillation device with liquid refrigerant flow check, which allows to separate oil/impurities/dyes very efficiently.
- Self-evacuation system (PURGE) which allows to change the type of refrigerant easily.
- Automatic stop of the unit when there is no refrigerant available in the system.
- Signal LED (green/cycle performed successfully - red/alarm).
- Safety device for maximum pressure.
- Two cut-off valves to prevent refrigerant discharge.
- Pulse free" gauges with regulation screw.
- Ceramic cylinder with carbon fiber seal.
- Sight glass and filter included.
- Wide graphics with quick functioning instructions.

Code	Model	Dimensions	Weight
13001022	EASYREC-2R	545 x 300 x 395 mm	19,6 kg



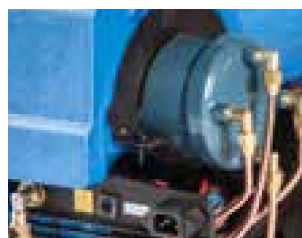
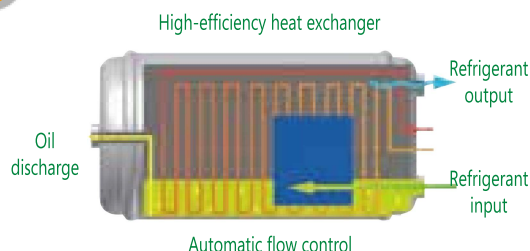
Specifications:

Refrigerant	CFC, HCFC, HFC and HFO (included R32 and R1234ze)
Power supply	220 - 240V AC 50 - 60 Hz
Motor power	750W
Maximal current draw	5A
Compressor	Piston-type and oil less
Automatic safety shut-off	38.5 bar/3850 kPa (558 psi)
Operating temperature	0 - 40 °C

Recovery rate	R12-R134a	R22-R407C	R404A-R410A-R507-R32
Vapour	28 kg/h	30 kg/h	32 kg/h
Liquid (recovery)	168 kg/h	198 kg/h	198 kg/h
Liquid (recovery-recycling)	32 kg/h	34 kg/h	36 kg/h
Push-pull	450 kg/h	510 kg/h	570 kg/h



Integrated distillation system



- HIGH heat exchange between "warm" refrigerant and "cold" refrigerant, that allows to optimize the distillation procedure
- Automatic flow control system
- Max filling up control
- Distillation device which allows to separate oil/impurities/dyes very efficiently

EASYREC-2

Recovery unit suitable for CFC, HCFC, HFC and HFO (included R32 and R1234ze)

- Self-evacuation system (PURGE) which allows to change the type of refrigerant easily.
- Automatic stop of the unit when there is no refrigerant available in the system.
- Signal LED (green/cycle performed successfully - red/alarm).
- Safety device for maximum pressure.
- Two cut-off valves to prevent refrigerant discharge.
- "Pulse free" gauges with regulation screw.
- Wide graphics with quick functioning instructions.

Code	Model	Dimensions	Weight
13001021	EASYREC-2	545 x 300 x 395 mm	16,2 kg



Specifications:

Refrigerant	CFC, HCFC, HFC and HFO (included R32 and R1234ze)
Power supply	220 - 240V AC 50 - 60 Hz
Motor power	750W
Maximal current draw	5A
Compressor	Piston-type and oil less
Blocco automatico di sicurezza	38.5 bar/3850 kPa (558 psi)
Operating temperature	0 - 40 °C

Recovery rate	R12-R134a	R22-R407C	R404A-R410A-R507-R32
Vapour	28 kg/h	30 kg/h	32 kg/h
Liquid (recovery)	168 kg/h	198 kg/h	198 kg/h
Push-pull	450 kg/h	510 kg/h	570 kg/h



Spare parts and accessories



Ref	Code	Model	Description	Dimensions	Weight
A	14015008	MG-111	Drier filter (1/4" SAE M-M)	100 x 40 x 40 mm	0,28 kg
A	14015041	MG-111-A	Allumina drier filter (1/4" SAE M-M)	100 x 40 x 40 mm	0,28 kg
B	14015013	XH412	"Hight capacity" drier filter (1/4" SAE M-M)	250 x 80 x 80 mm	1,10 kg
B	14015042	XH412-A	"Hight capacity" with allumina drier filter (1/4" SAE M-M)	250 x 80 x 80 mm	1,10 kg
	13008026	REC026	Sight glass	90 x 40 x 50 mm	0,17 kg
C	14020014001	G19020-WIG	Kit 10 gaskets for 1/4" SAE flexible hoses	160 x 90 x 10 mm	0,02 kg
D	06071013003	GYSS/4-4/6/Y	Connection hose for filter 1/4" SAE 150 mm	250 x 50 x 50 mm	0,16 kg

"HIGH PERFORMANCE" RECOVERY - RECYCLING UNIT



INCLUDED
R32

INCLUDED
R1234ze

COMPLIANCE
ISO 11650

NF EN35421
CE N. 1005 2009
UE-517/2014

HIGH PERFORMANCE



EASYREC-HP

The ideal recovery-recycling unit for large refrigeration systems with high quantities of refrigerant

- Suitable for CFC-HCFC, HFC and HFO (included R32 and R1234ze).
- Distillation device with automatic refrigerant flow check, which allows to separate oil/impurity/dyes very efficiently.
- Self evacuation system (PURGE) which allows to change the type of refrigerant easily.
- Automatic stop system at the end of the recovery-recycling cycle (green light on).
- Safety pressure switch (red light on – alarm).
- Cut-off valves to prevent refrigerant discharge.
- Ø80 pulse free gauges with adjustment screw.
- Flexible hoses 1500mm with valves.
- Two filters in suction side and one filter in pressure side.
- Sight glasses in suction side.
- Large panel with quick functioning instructions.

Code	Model	Dimensions	Weight
13001025	EASYREC-HP	605 x 570 x 800 mm	65 kg



Specifications:

Refrigerant	CFC, HCFC, HFC and HFO (included R32 and R1234ze)
Power supply	230/1/50
Motor power	1800W
Maximal current draw	8A
Compressor	With oil
Blocco automatico di sicurezza	37 bar
Operating temperature	10 ÷ 50 °C

Recovery rate

Recovery-recycling	60 kg/h
Push-pull	660 kg/h



Spare parts and accessories

Code	Model	Description	Min. Qty
14015008	MG-111	Drier filter (1/4" SAE M-M)	-
14015041	MG-111-A	Allumina drier filter (1/4"SAE M-M)	-
14015013	XH412	"Hight capacity" drier filter (1/4" SAE M-M)	-
14015042	XH412-A	"Hight capacity" with allumina drier filter (1/4" SAE M-M)	-
13008026	REC026	Sight glass	-
06077002001	V/GYSS/4-4/60B	Blue flexible hose 1500 mm with valve	-
06077002002	V/GYSS/4-4/60R	Red flexible hose 1500 mm with valve	-
06077002003	V/GYSS/4-4/60Y	Yellow flexible hose 1500 mm with valve	-
06071013003	GYSS/4-4/6/Y	Filter connection tube 1/4" SAE 150 mm	-
12002017	W68	Ester oil 1000 cc	9 pz

MF4/KK

Rotary vane type high flow pump

Usable with all refrigerants in liquid phase.

Positive displacement, volumetric gear pump.

New gear in KK material (can work dry for a few time).

Ref	Code	Model	Description
A	02041015	MF-4/KK	High vane pump
B	15014001	71/4F-M	Motor for MF4/KK

Ref	Code	Dimensions	Weight
A	02041015	100 x 140 x 175 mm	1,6 kg
B	15014001	240 x 140 x 180 mm	7 kg



Specifications:

	MF4/KK	71/4F-M
Flow rate with 20 cPs fluid	3 ÷ 4 l/min.	-
Flow reate with lubricant	4 ÷ 5 l/min.	-
Max. Δ pressure	15 bar	-
Viscosity cPs	1 ÷ 60	-
Connections	3/8" GAS	-
Power supply		230/1/50
Motor power		350W



RECOVERY BOTTLES W2 SERIES

12.5 and 40 liters refillable bottles with double valve (liquid/vapour).

Ideal for storing refrigerants recovered/recycled from refrigeration systems.

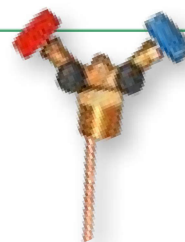
Ref	Code	Model	Ability	Min. Qty
A	11001062	W2-WR10K/44	12,5 lt	2
B	11001124	W2-WR9K/48/5	12,5 lt	2
C	11001059	W2-WR40K/49	40 lt	-

Ref	Code	Weight	Connections
A	11001062	5,9 kg	1/4" SAE
B	11001124	5,9 kg	5/16" SAE
C	11001059	21 kg	1/4" SAE



Spare parts

Code	Model	Suitable for bottle
05002016	RF2-1/4"	W2-WR10K/44
05002032	RF2-5/16"	W2-WR9K/48/5
05002022	RF2-40K-1/4"	W2-WR40K/49

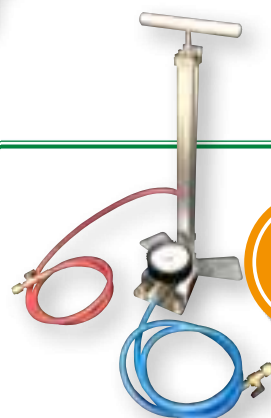


Hydrocarbons recovery R600a-R290-R1270



R-ECOPUMP is the system specifically designed for the recovery/transfer/charge of flammable Refrigerants, such as R600a-R290-R1270 (HC).

R-ECOPUMP allows you to quickly recover HCs (R290-R600) with simplicity and full safety, reaching a vacuum level of -0.8 relative bars.



SEE
PAGE 101

REFRIGERANT VISUAL DIAGNOSIS



SERIE SPY

New SPY manifold family (in 2 or 4 ways version)

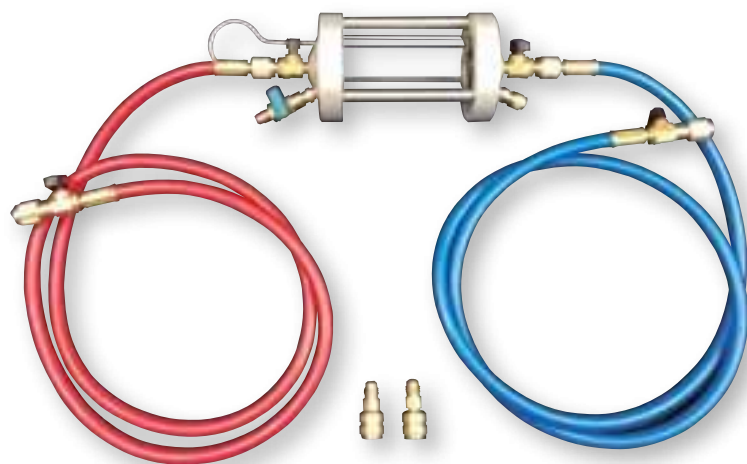
The information currently provided by the gauge manifolds on the market is limited to pressures and temperatures. Important but incomplete information, since the visor (indicator) traditionally incorporated does not allow us, or barely, to guess the passage of the refrigerant, its phase (liquid or vapor) and its quality.

The innovative SPY WIGAM manifolds, in order to support technicians in their daily work, are equipped with an integrally transparent central body and represent the new frontier of these service equipment.

Here are some of the indications that can be obtained quickly and easily using SPY:

- Show clearly if we are working with refrigerant in liquid or vapour phase.
- Show clearly the presence of contaminants in the refrigerant.
- Show the state of miscibility of the refrigerant with oil
- Assist visual diagnosis with chemical analysis thanks to the oil sample collection procedure

Through the EASYREC-R and SPY it will be possible to "view" the quality of refrigerant before recovery and after recycling.



Specifications:

Length	240 mm
Diameter cylindrical glass	50 mm
Maximum pressure	40 bar
Maximum temperature	50 °C
Capacity	150 ml



INSPECTOR HVAC

Diagnosis instrument for checking the HVAC systems refrigerant and oil quality

The diagnosis instrument INSPECTOR-HVAC enables to check the "health" of your HVAC system, simply by connecting to the high and low pressure connections.

The oil and the oil/refrigerant mixture will be easily visible inside the glass cylinder. Oil miscibility with refrigerant, oil quality and possible water content or contaminating particles can be analyzed visually, so that you can take actions.

The discharge valve, thanks to its considerable internal section, enables to drain easily the possible contaminants.

Furthermore, INSPECTOR-HVAC allows to take oil samples for analysis.

By means of the recovery and recycling system EASYREC-R/HP and INSPECTOR, it will be possible to "inspect" the recovered and recycled refrigerant.

Equipped with:

- 2 flexible hoses 1500 mm (blue and red) with valve
- Sturdy plastic case

Code	Model
13006039	INSPECTOR HVAC