

Tank Condensate Pump

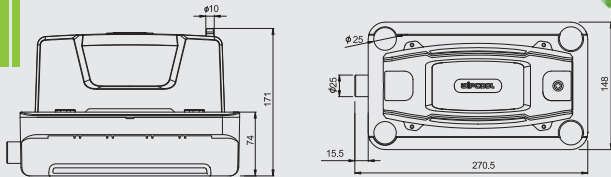
Ultra-high Lift, Super Big Flow

- Super performance(12M lift,580L/h flowrate)
- Forced air cooling , ensure stable running
- Anti-backflow design,improve the safety
- Floatless structure, free maintenance for long time work



P580

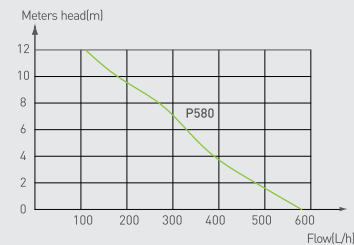
DIMENSIONS



INSTRUCTIONS



FLOW RATE



TECHNICAL DATA :

Model	P580	Tank Capacity	1.8 L
Voltage	230V~/50-60Hz or 115V~/50-60Hz	Sound Level at 1m	60dB(A)
Discharge Head(max.)	12m(40ft)	Ambient Temp.	0°C~50°C
Flow Rate(max.)	580L/h(153GPH)	Power Consumption	85W

Supermarket Condensate Pump

Special Desgin, Simple Installation

- Made of stainless steel case with 3L large reservoir
- Ideal for cold produce display cabinets in supermarkets and convenience stores
- Low profile (70mm height) for extremely easy to install and maintain.
- Built of heat resistant material,suitable for handling 70°C high temperature water

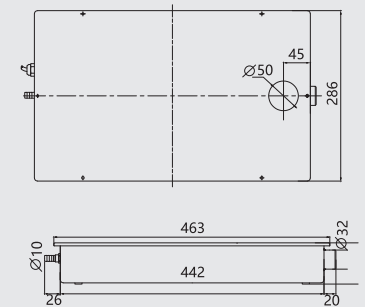


P120S

INSTRUCTIONS



DIMENSIONS



TECHNICAL DATA :

Model	P120S
Voltage	230V~/50-60Hz or 100-120V~/50-60Hz
Discharge Head(max.)	Max,30M(98ft)
Flow Rate(max.)	Max,120L/h(32GPH)
Tank Capacity	3L
Sound Level at 1m	40~62dB(A)
Water Temp.	Max 75°C
Power	30W

FLOW RATE

